

COVID-19 RESPONSE UPDATE

Washington State Board of Health

March 10, 2021

COVID-19 Vaccine Response Update

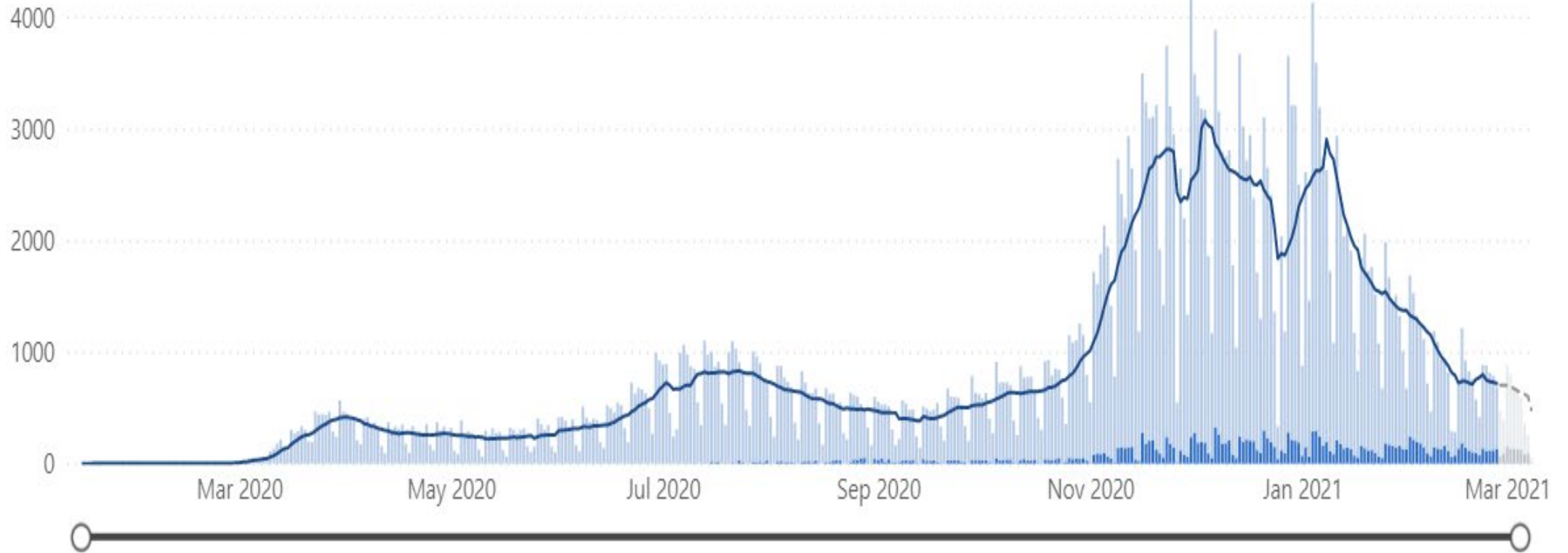
Scott Lindquist MD MPH

State Epidemiologist for Communicable Diseases

Washington State Department of Health

CASE COUNTS

● Probable Cases ● Confirmed Cases ● Incomplete (Probable Cases) ● Incomplete (Confirmed Cases) — Total Cases (7 day avg.) - - - Incomplete (7 day avg.)



DAILY VACCINATION GOAL ACHIEVED!



CURRENT:
45,221
vaccinations
per day

7-DAY AVERAGE AS OF 3/3/2021

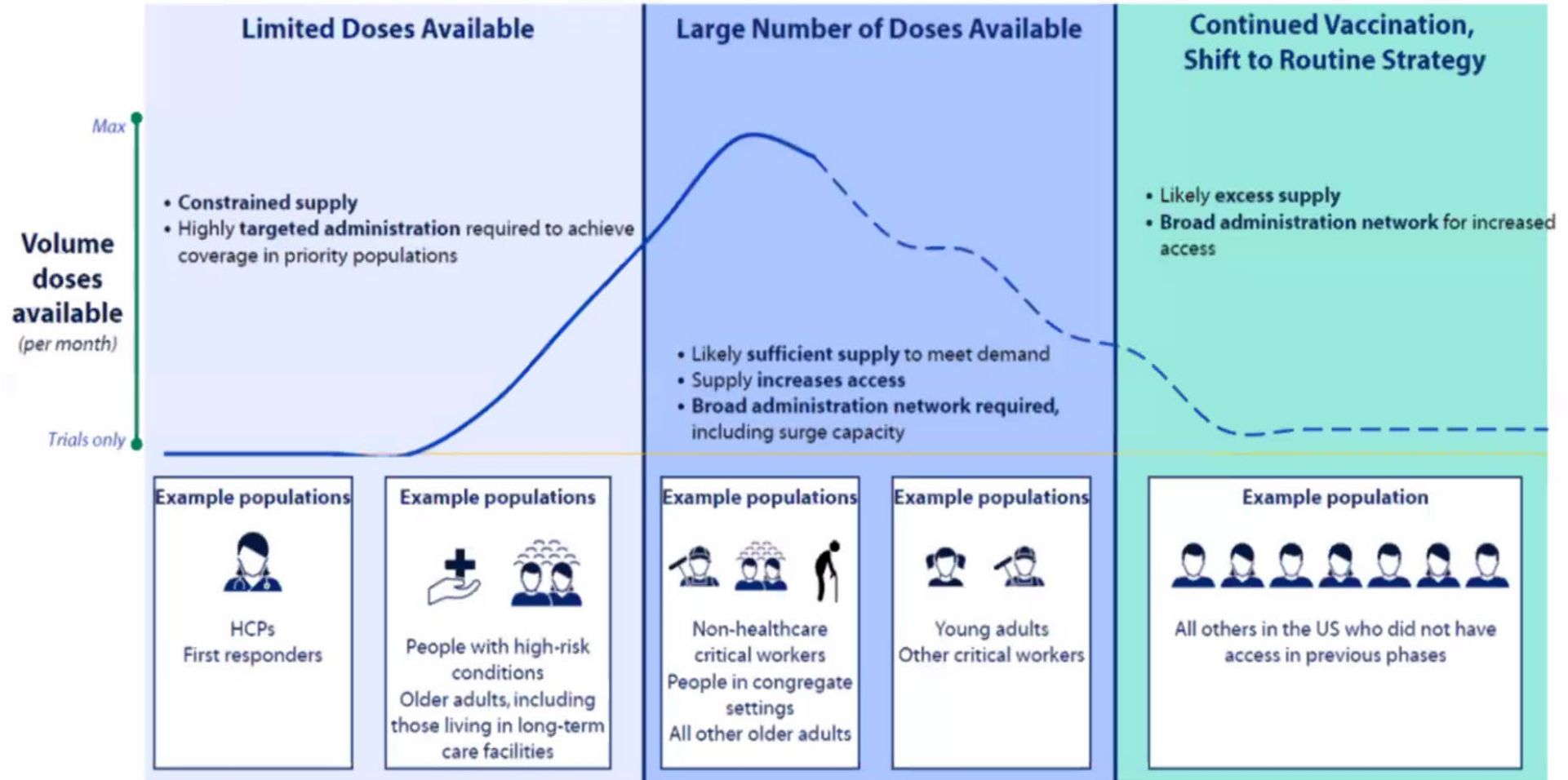
GOAL:
45,000
vaccinations
per day

**Vaccinate
WA** 

CovidVaccineWA.org

Vaccine Supply

Distribution will adjust as volume of vaccine doses increases



Janssen (Johnson & Johnson) Vaccine Receives EUA

- FDA issued an emergency use authorization (EUA) for the Janssen COVID-19 vaccine candidate on February 27th
- Advisory Committee on Immunization Practices (ACIP) voted to recommend the Janssen vaccine for those 18+ on February 28th
- Western States Scientific Safety Review Workgroup recommends the Janssen vaccine on March 2nd
- Janssen vaccine is a one dose vaccine
- Clinical trial data showed it to be 66% effective against moderate to severe COVID-19 disease
- Washington received our first allocation of the Janssen: 60,900 doses
- Washington was told that we will not receive additional Janssen vaccine until end of the month
- Janssen vaccine won't significantly boost supplies right away. **Vaccine supply continues to be constrained.**

3 Week Forecast

	March 07, 2021 Forecast For Week Ending	March 14, 2021 Forecast For Week Ending	March 21, 2021 Forecast For Week Ending
All Vaccines	309,770 Total Doses - All Vaccine Types	320,300 Total Doses - All Vaccine Types	327,320 Total Doses - All Vaccine Types
Pfizer	91,260 1st Doses - Pfizer	91,260 1st Doses - Pfizer	91,260 1st Doses - Pfizer
	73,710 2nd Doses - Pfizer	84,240 2nd Doses - Pfizer	91,260 2nd Doses - Pfizer
Moderna	72,400 1st Doses - Moderna	72,400 1st Doses - Moderna	72,400 1st Doses - Moderna
	72,400 2nd Doses - Moderna	72,400 2nd Doses - Moderna	72,400 2nd Doses - Moderna
Janssen	0 1st Doses - Janssen	0 1st Doses - Janssen	0 1st Doses - Janssen

Vaccine Allocation

Vaccine supply continues to be the biggest challenge

- Each week providers request vaccine through the state's Immunization Information System (WAIS)
- We then make our vaccine allocation decisions on balancing several factors:
 - Pro-rata population.
 - Data from each provider about the amount of vaccine they are requesting, the populations they serve, the type of storage equipment they have, and their capacity.
 - Information on inventory on hand and documented throughput (based on the data they are reporting to the state), and are they meeting the requirement to use 95% of their allocated vaccine in 7 days.
 - Equity factors – ensuring that there is vaccine in all counties and also that providers serving the highest risk populations are getting vaccine.
 - Getting a proportion of available vaccine to all provider types.

Where and when are
vaccinations being given?How many people are getting
vaccinated?

Who is getting vaccinated?

**COVID-19 IN WASHINGTON STATE** [Where and when are vaccinations being given?](#)

DATA AS OF 3/3/2021 11:59 PM PT

This chart shows the number of COVID-19 vaccines given in Washington state facilities and reported to the state. Vaccine doses given reflects the data reported to the state as of the latest update date. Please note, the measures "vaccines given" and "people vaccinated" are not comparable. Vaccines given counts number of doses given in a location. People vaccinated counts number of Washington residents initiating vaccination and becoming fully vaccinated. Numbers may not always align since people may live in a different county than where they got vaccinated. Vaccination data are updated on Mondays, Wednesdays, and Fridays only. [Learn More](#)

SELECT COUNTY

Search

- Select all
- Adams County
- Asotin County
- Benton County
- Chelan County
- Clallam County
- Clark County
- Columbia County
- Cowlitz County
- Douglas County
- Ferry County
- Franklin County
- Garfield County
- Grant County

By Location

By Date

Vaccine Doses Given
and Reported (statewide
or selected counties)

1,865,640

Statewide Measures Only

Vaccine Doses Given
and Reported in
Washington

1,865,640

Doses Delivered to
Washington Providers

2,227,970

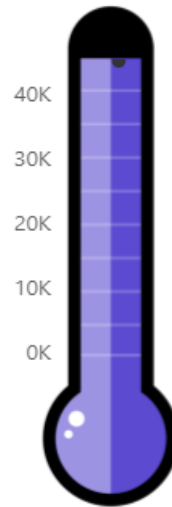
Doses Delivered for
CDC long-term care
vaccination program

186,030

Percentage of
Delivered Doses
Given

77.28%

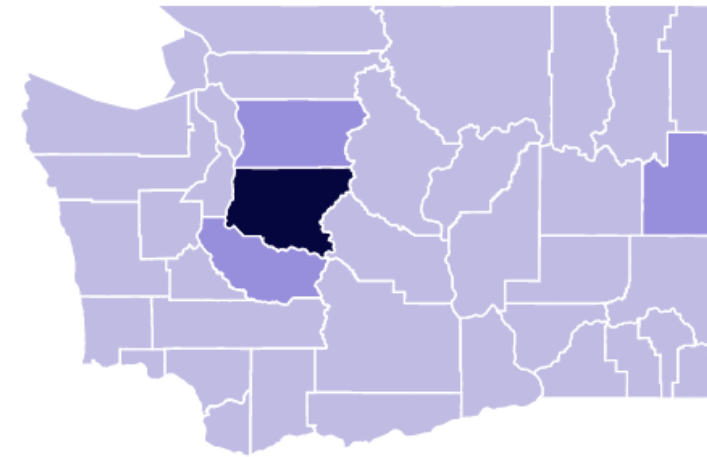
VACCINE DOSES GIVEN AND
REPORTED PER DAY
Washington State



DOH Goal:
45,000

Current 7-day
average:
45,221

VACCINE DOSES GIVEN AND REPORTED IN WASHINGTON COUNTIES

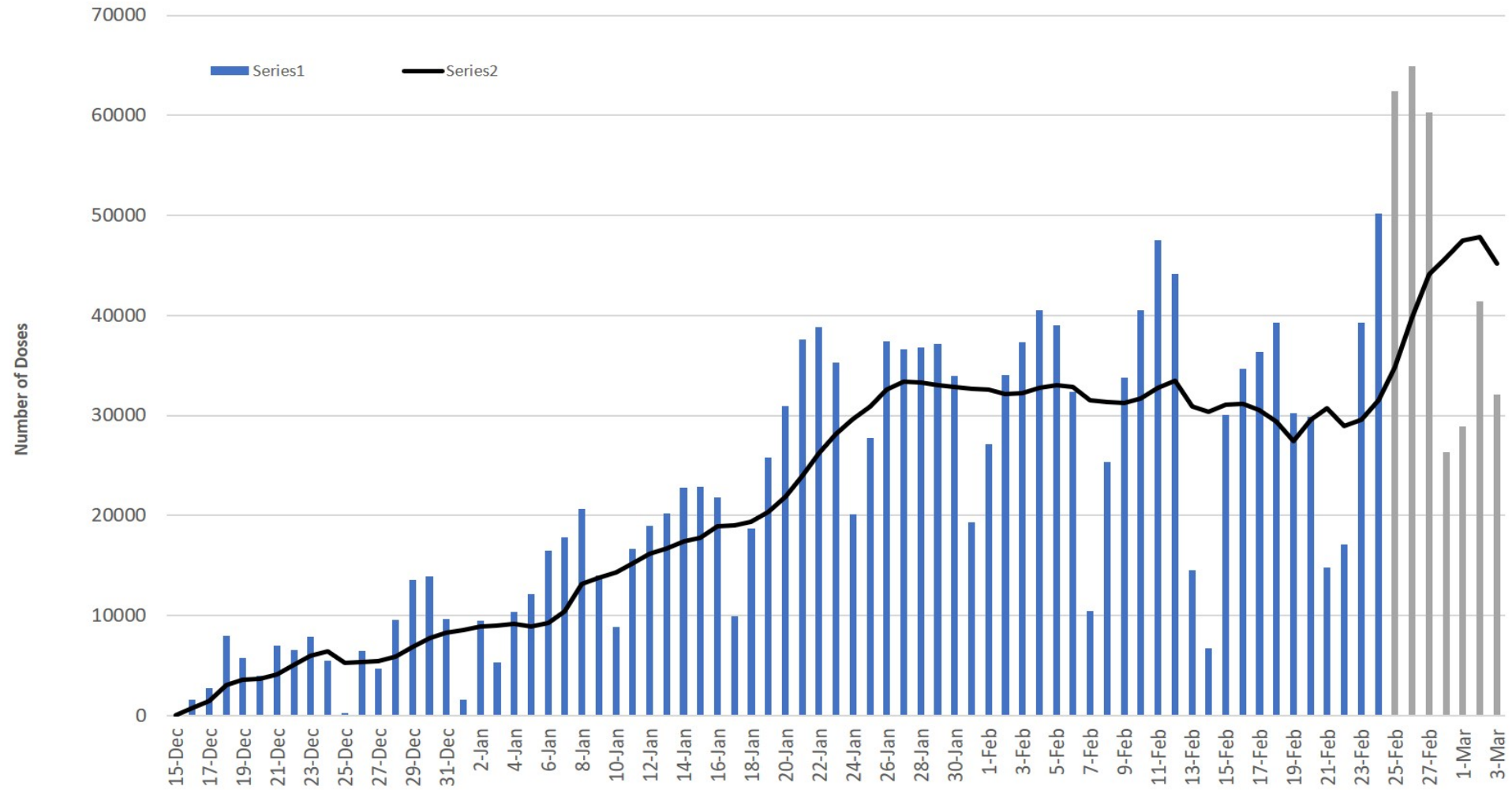


0 1 to 125,002 125,003 to 250,004 250,005 to 375,006 375,007 to 500,008 500,009 to 625,010

County data for doses given are based on the location of the facility giving the vaccine. 44,265 vaccine doses given do not have a county reported.

County-level information can be found on Local Health Jurisdiction ([LHJ](#)) websites

COVID-19 Vaccine Doses Administered in Washington State by Date



Data source: Washington State Immunization System, reported as of 11:59pm 3/3/2021

Light grey bars represent incomplete data due to reporting lag

Note: Dose administration data reported as of date lags by 2 days to allow for data processing and quality assurance checks.

Washington Plan for Increased Vaccinations

Note: Vaccine Supply Constraints Remain

- **Traditional** Delivery Systems

1. Healthcare system (hospitals and clinics)
2. Pharmacies
3. Workplace clinics

- **Enhanced** Delivery Systems:

1. Local jurisdiction operation high volume community vaccination sites
2. Mobile vaccination teams
3. Community-based pop-up clinics

- **Mass Vaccination** Delivery Systems (state-supported):

- High through-put mass vaccination sites
- Mobile vaccination teams

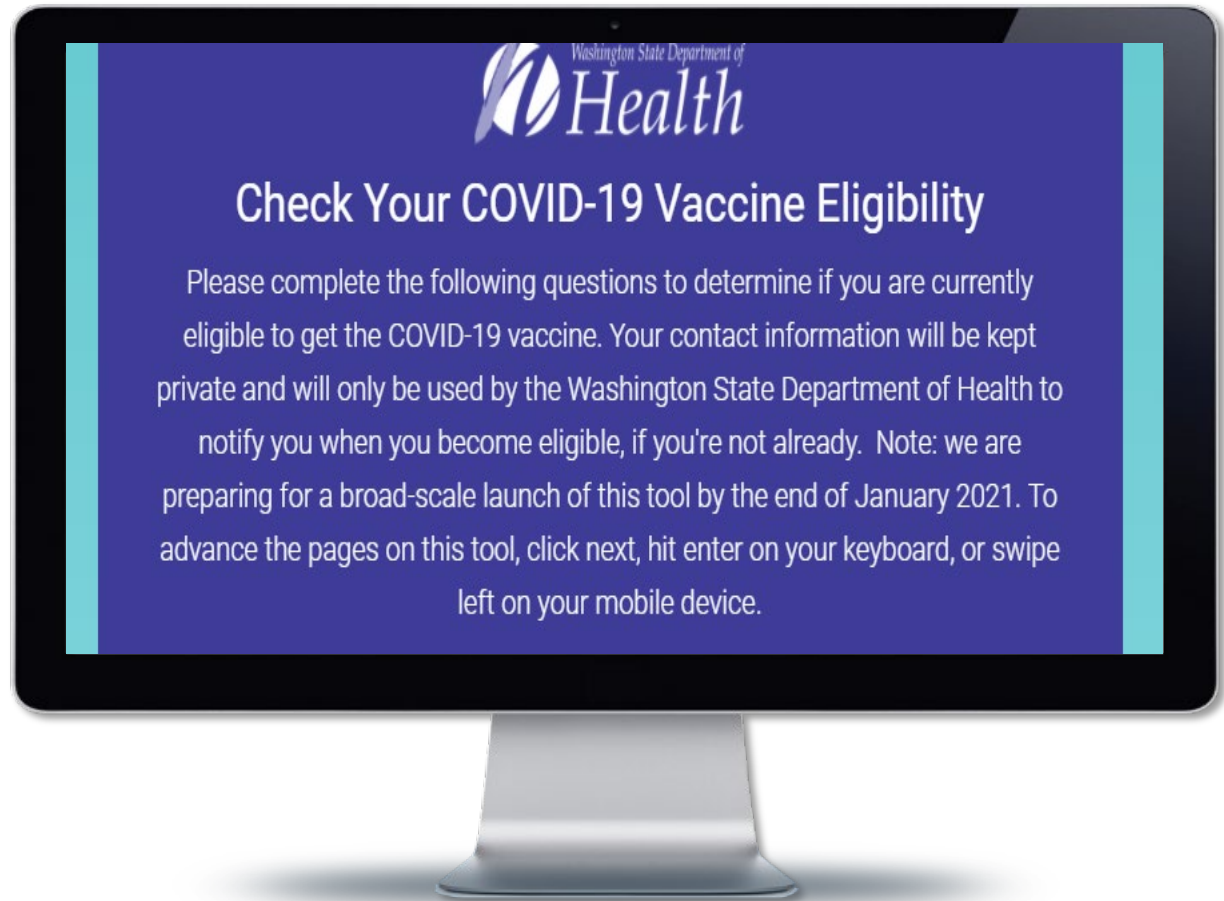
Mass Vaccination Clinics

	As of: 3/4/2021	4:00 PM
POD/V		Total
<u>Benton County Fairground</u>		25,324
<u>Spokane Arena</u>		18,937
<u>Chelan County Toyota Town Center</u>		21,409
<u>Clark County Fairground</u>		23,067
<u>Mobile Team 5</u>		4,118
Total Residents Vaccinated:		92,855



Phase Finder

- [FindYourPhaseWA.org](https://www.findyourphasewa.org)
- Vaccination provider list for those who are eligible
- Those not eligible– text or email when phase opens
- For people unable to use PhaseFinder because of language, disability, or technology barriers: 1-800-525-0127



Equity & Engagement COVID-19 Vaccine Planning

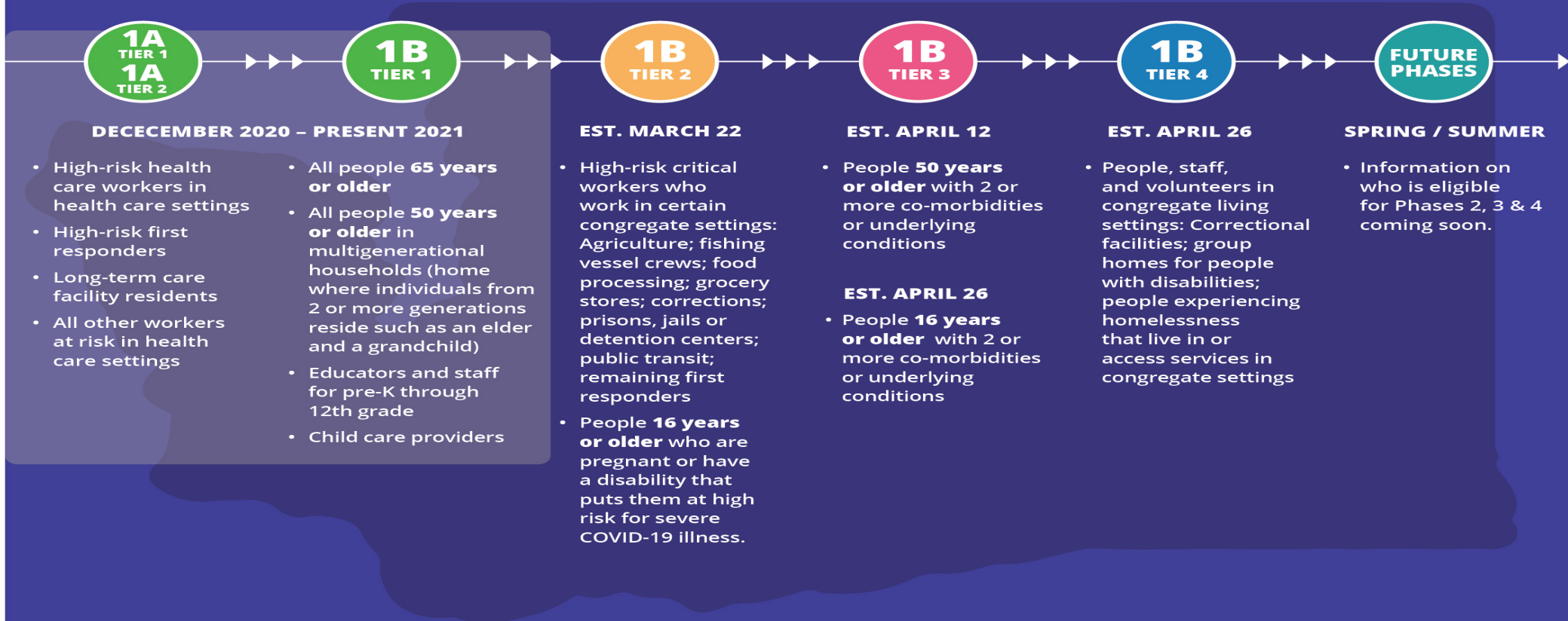
Paj Nandi

Community Relations & Equity Director
Washington State Department of Health

WASHINGTON'S COVID-19 VACCINE PHASES

Phase 1 Estimated Start Dates (Tiers A and B)

Find out if it's your turn at [FindYourPhaseWA.org](https://www.findyourphasewa.org)



FOCUS ON EQUITY: This approach prioritizes population groups who have been disproportionately impacted by COVID-19 due to external social factors and systemic inequities, including people of color; people with limited English proficiency; people in shared housing, crowded housing, and multigenerational homes; people in poverty and low-wage earners; people with disabilities that are connected to underlying health conditions that may put them at higher risk of COVID-19; and people with access barriers to healthcare. The [social vulnerability index](#) is one of several inputs informing equitable vaccine allocation.

NOTE: Immigration and health insurance status do not impact eligibility.

The timeline represented here is tentative and subject to change based on vaccine supply and demand.

**Vaccinate
WA** 

[CovidVaccineWA.org](https://www.covidvaccinewa.org)

DOH 348-785 January 2021
Last updated 3/4/21

Washington Vaccine Distribution

1. Healthcare systems
2. Pharmacies
3. Employer-based clinics
4. State mass vaccination sites

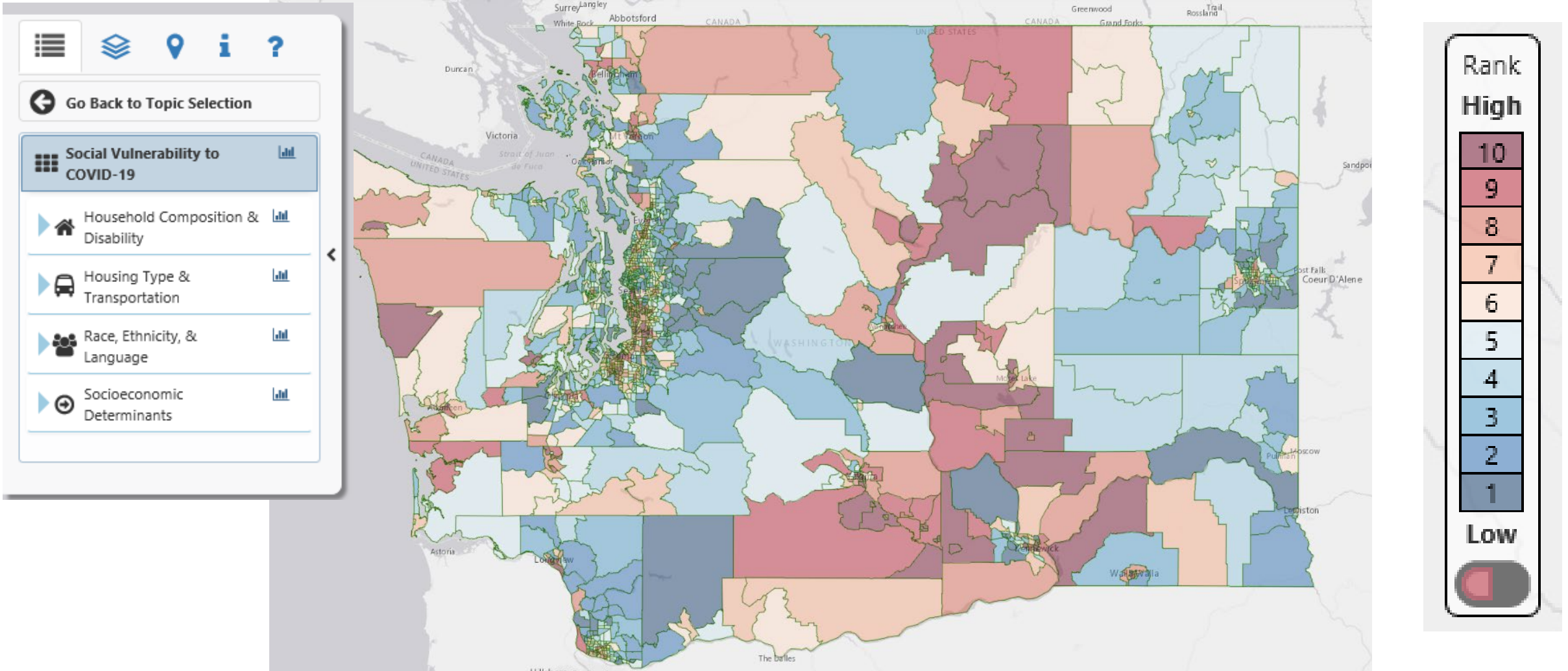
DOH COVID-19 CURRENT VACCINE EQUITY STRATEGIES

1. Engage communities to inform vaccine prioritization and planning
- ★ 2. **Integrate a pro-equity approach into vaccine allocation and distribution**
- ★ 3. **Prioritize allocation and support to providers who effectively serve disproportionately impacted communities**
4. Invest in trusted community leaders, messengers and organizations
5. Ensure all communications, education and outreach efforts are culturally and linguistically appropriate and accessible
6. Strengthen the public health system's ability to center communities in vaccine outreach and access
7. Foster opportunities for collaboration
8. Support a trauma-informed approach to vaccine conversations

Ensuring equitable access: **Where to start**

- ❑ Use DOH's [COVID-19 Social Vulnerability Index \(SVI\)](#) for planning.
- ❑ Reserve appointments to be filled directly by trusted community partners.
- ❑ Reserve appointments to be filled by phone only.
- ❑ Collect race, ethnicity, and language data and ensure appropriate reporting through the IIS.
- ❑ Provide alternative and accessible options for those to get their vaccine.
- ❑ Ensure translated and culturally relevant materials are available on-site.
- ❑ Set up telephonic interpretation services.
- ❑ Be explicit in your statements that the vaccine is for everyone, including immigrants and any person living or working in Washington regardless of immigration status.

COVID-19 Social Vulnerability Index



<https://fortress.wa.gov/doh/wtn/WTNIBL/>

Pro-equity Strategies

Partnerships &
Outreach

Addressing
Access Barriers

Equitable
Allocation

Communications
& Outreach

Partnership & Outreach

- ❑ Engage and collaborate with trusted community organizations and leaders
- ❑ Community-based scheduling appointments
- ❑ Co-sponsoring vaccine events and outreach with community partners

Proactively Address Access Barriers

- ❑ **Ensure accessibility for People with disabilities**
 - ❑ Review and complete Checklist to Ensure Vaccine Sites are Accessible to People with Disabilities
 - ❑ Know the accommodation needs of your community
- ❑ Create alternative pathways for appointment registration
- ❑ Provide transportation assistance
- ❑ Provide alternative and accessible options for getting vaccine
- ❑ Provide weekend options and extended hours
- ❑ **Ensure Language Access**

Communications & Outreach

- ❑ **Ensure all communications, education, and outreach efforts are culturally and linguistically appropriate and accessible**
- ❑ Ensure translated and culturally relevant materials are available on-site.
Translation/interpretation services can be offered in-person and via phone service
- ❑ Identify the top languages in your area
- ❑ **Community representative staffing and volunteers**

Equitable Allocation

❑ **Equitable site placement**

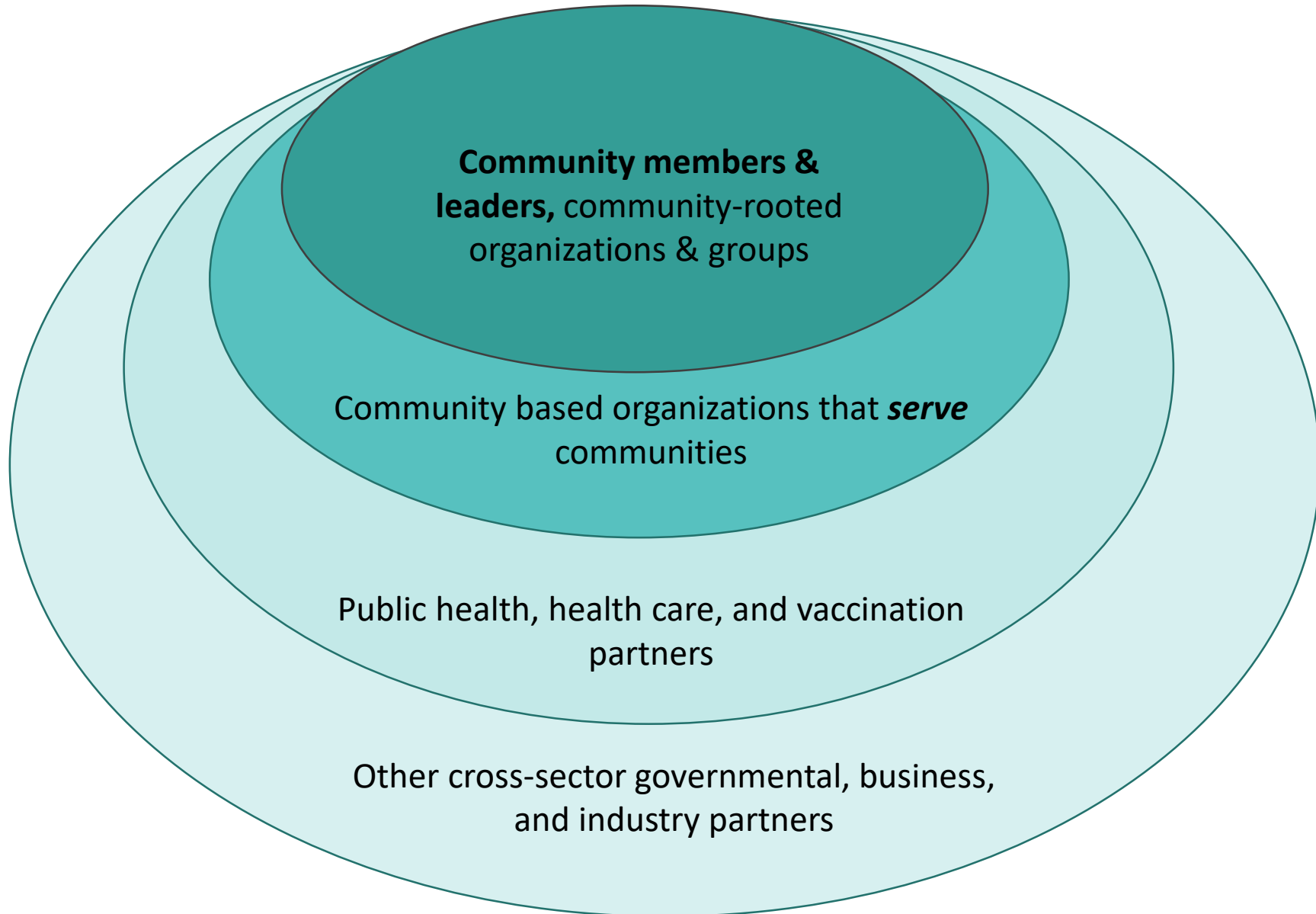
- ❑ Equitable Site Planning Tool
- ❑ Prioritize communities with higher social vulnerability to COVID-19 by using [Washington Tracking Network, Information by Location Mapping Tool: COVID-19 Social Vulnerability Index](#)
- ❑ Prioritize allocation and support to providers who effectively serve disproportionately impacted communities
- ❑ Offer advance scheduling to community organizations
- ❑ Offer mobile clinics
- ❑ Identify community specific place-based sites
- ❑ Create an extra dose plan

EQUITY STRATEGIES



SELECT EXAMPLES

Equitable participation and power sharing



Community Outreach Services Contracts

1. Washington State Coalition of African Leaders
2. Cofa Alliance National Network (CANN)
3. WA Spokane Immigrant Rights Coalition
4. Community 2 Community
5. Familias Unidas Economy and Ecology Project
6. The Maternal Coalition
7. Afghan Health Initiative
8. Open Doors for Multicultural Families
9. Hearing, Speech & Deaf Center
10. The Coffee Oasis-Pierce County
11. CAFÉ: The Community for Advancement of Family Education
12. CIELO Project Radio Ranch
13. Our Valley Our Future
14. Entre Hermanos

Community Driven Messaging: Community Media

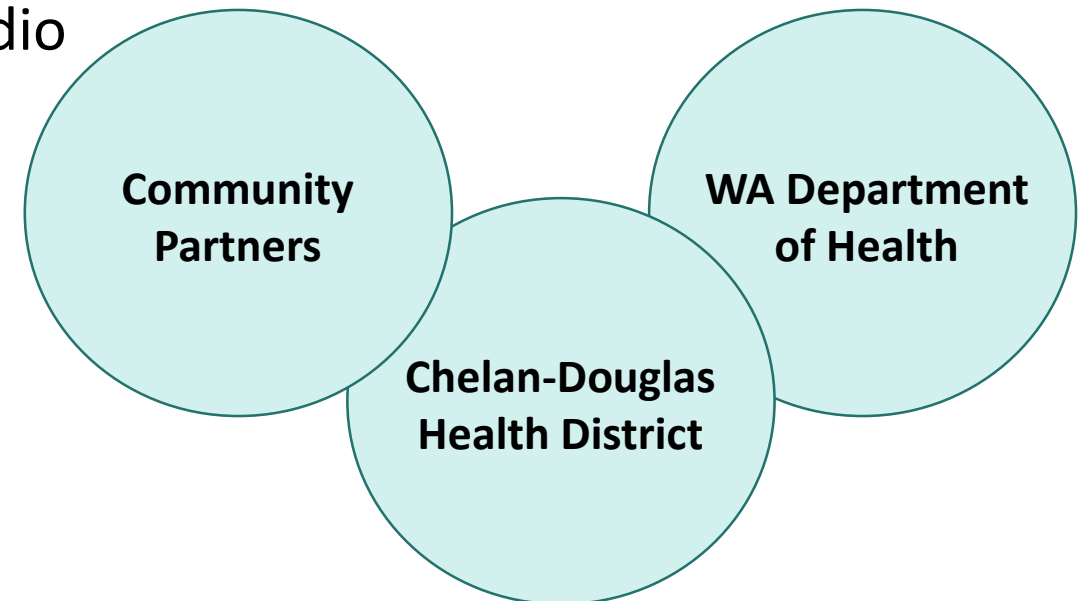
- The Black Lens
- The Facts
- The Seattle Medium/Rhythm and News Radio
- The Skanner
- Crossings TV
- Chinese Radio Seattle on KKNW 1150 AM
- Alternative Talk
- Salon Ethiopia
- Hawai'i Radio Connection on KXPA 1540 AM
- Titre Avval
- Junglecity.com
- Dreamdriver Works Seattle and Korean Community Service Center
- KDNA FM 91.9
- KKMO 1360 AM - Radio El Rey
- "KUNS-TV Univision-Seattle KOMO-TV Noticias Univision on KUNS Univision Seattle/Yakima/Tri-Cities"
- KNTS 1680 AM - Radio Luz
- La Nueva 103.3 FM and 92.1 FM - Alpha Media USA
- La Pera
- La Voz Hispanic Newspaper (Ads)
- Latino Northwest Communications
- Rainier Avenue Radio (RainierAvenueRadio.world)
- Radio Continent on KXPA 1540 AM (Radio Continent)
- KXPA (Multiethnic, includes U.S. Chinese Radio on KXPA 1540 AM)
- KARI 550 Seattle Chinese Radio (Mandarin)
- It's Not Evening Yet on KKNW 1150 AM Alternative Talk (S Media)
- Runta (The Truth)
- Salaxley TV
- Vietnamese Today Weekly News / Người Việt Ngày Nay

Community Driven Messaging: CBOs

- NAACP Vancouver
- Somali Community Services of Seattle
- Clark County Latino Youth Conference
- Hispanic Business/Professional Association and Foundation (HBPA)
- Tri-Cities Hispanic Chamber of Commerce
- Gay City
- U.T.O.P.I.A. (United Territories of Pacific Islanders Alliance)
- Gender Justice League
- TRACTION (TRans Community ACTION) & Heartspark Press
- AHANA
- Islamic Center of the Tri Cities
- Refugee & Immigrant Services Northwest
- Pacific Islanders Community Association of Washington (PICA-WA)
- Hmong Association of Washington
- Center for Independence
- Central Washington Disability Resources (CFI)
- Clallam Mosaic
- The Arc of King County
- The Arc of Washington State
- Alliance of People with disAbilities
- Washington State School for the Blind

Wenatchee Mass Vax Site Latinx Pilot

- Spanish only appointment link
- As of 2/11, 100 appointments have been reserved/day for Spanish Speaking
- Bi-lingual call center staffed via community partner Wenatchee CAFÉ
- Wenatchee CAFÉ funded by DOH
- Promotion via La Pera, La Nueva Spanish radio (funded by DOH) and Wenatchee World
- LHJ also takes calls in Spanish





The Black Lens, Spokane

- Community driven, community led
- Black/African American Community
- Funded \$50,000
- DOH lead for Black/African American engagement joined this panel

HOW DO BLACK FOLKS REALLY FEEL ABOUT THE VACCINE?

LET'S TALK ABOUT IT.

A {VIRTUAL} COMMUNITY CONVERSATION

QUESTIONS AND ANSWERS FROM A PANEL OF BLACK MEDICAL PROFESSIONALS AND COMMUNITY MEMBERS.

ON ZOOM
SAT. FEBRUARY 20TH
10 AM

Kiantha Duncan
Moderator

Dr. Okechukwu Ojogho
Providence Sacred Heart

Anna Franklin
Providence Health Care

Faith Washington
RN, Inland Imaging

Betsy Wilkerson
Spokane City Council

Walter Kendricks
President Ministers Fellowship

Daphne Davis
Onyx Catering Company

Jada Richardson
Senior, Innovation High School

Jermaine Williams
Freedom Project East

PLEASE FOLLOW THIS LINK:



Familias Unidas por La Justicia

- Farm worker union in Burlington, WA representing over 500 Triqui, Mixteco, and Spanish speaking workers
- Funded \$40,000
- Ex: Produced tutorials in Triqui, Mixteco, and Spanish on how to search for verified information on vaccines and how to use the Phase Finder Tool



Islamic Faith Center of Tri-cities

- Serves 1,500+ families in Tri-Cities area that are refugees/immigrants and speak various languages
- Funded \$20,000
- Ex: Young people created their own video to address vaccine misinformation in their community.



Islamic Center Of Tri-Cities -New Page

February 8 at 7:12 PM · 🌐

As part of our commitment to serve and help the community, the Sunday school and ICTC scout troop 279 produced a movie to help people understand the importance of COVID 19 vaccine, share facts about the vaccine, and clarify any misconception about some of the myths circulating about it.

We would like to thank all the students who participated, and we hope you share this video with your family , and friends

<https://youtu.be/1Dm2Y6pkhvU>



YOUTUBE.COM

Say NO to Myths about COVID-19 vaccine

Islamic Center of Tri-Cities Sunday School & Scout Troup 279

👍❤️ 11

1 Comment 1 Share



Like



Comment



Share

Washington State School for the Blind

- Developed and launched a blind and low-vision friendly website of COVID-19 resources that also includes a podcast. blindcovid.com
- Funded \$11,400
- Includes images from a collaborative disability inclusive photoshoot showcasing COVID-19 precautions



Image Description: A person is walking down the sidewalk with their guide dog, wearing a protective face-mask. It is an urban setting in downtown Spokane with tall buildings. The person is walking with their friend who is also wearing a protective face-mask.

Language Access

- ❑ Translated materials & forms
- ❑ Communication cards on site
- ❑ Telephonic interpretation services
- ❑ Alternative pathways for appointment registration

COVID-19 VACCINE COMMUNICATION CARD

YES NO
 ? I don't know

A	B	C	D	E	F	G	H	I	J	K	L	M	N	O
P	Q	R	S	T	U	V	W	X	Y	Z				
		0	1	2	3	4	5	6	7	8	9			

HOURS DAYS

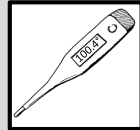
Tell the provider all of your medical conditions, including:



received a COVID-19 vaccine



allergies



fever



bleeding disorder



on blood thinner



pregnant or planning pregnancy



breastfeeding



Immunocompromised or on medicine affecting immune system

Don't get vaccine if you:



are younger than 16 years of age



had a severe allergic reaction after a previous dose of this vaccine



had a severe allergic reaction to any ingredient of this vaccine

Possible side effects:



injection site pain



injection site swelling



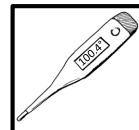
injection site redness



muscle or joint pain



swollen lymph nodes



fever



chills



tiredness



nausea



feeling unwell

COVID-19 VACCINE COMMUNICATION CARD

I communicate in...

American Sign Language

አማርኛ – Amharic

العربية – Arabic

ဗမာစကား – Burmese

Khmer (ភាសាខ្មែរ) – Cambodian

简体中文 – Simplified Chinese

繁體中文 – Traditional Chinese

Chuukese (Chuuk)

français – French

(fārsī) فارسی – Farsi (Persian)

Deutsch – German

हिन्दी (hindī) – Hindi

Hmoob – Hmong

日本語 – Japanese

(ကညီကျိာ်) – Karen

한국어 [韓國語] – Korean

ພາສາລາວ (pháasaa láo) – Lao

Kajin M̧ajeļ – Marshallese

Cuyamecalco Mixtec – Mixteco Bajo

नेपाली – Nepali

Afaan Oromo – Oromo

Português – Brazil

panjābi) – Punjabi) پنجابى /

limba română / român – Romanian

Русский – Russian

Gagana Samoa – Samoan

af Soomaali – Somali

Español – Spanish

Kiswahili – Swahili

Tagalog – Tagalog

தமிழ் (tamil) – Tamil

తెలుగు (telugu) – Telugu

ภาษาไทย (paasaa-tai) – Thai

ትግርኛ (təgərəña) – Tigrinya

Українська (Ukrajins'ka) – Ukrainian

اردو – Urdu

Tiếng Việt – Vietnamese

Communication Needs



language
interpreter



ASL
interpreter



get my
family



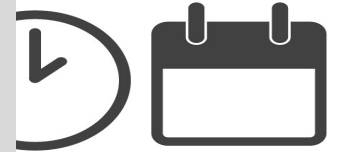
pen and
paper



assistive
listening
devices



lip reading





To request this document in another format, call 1-800-525-0127. Deaf or hard of hearing customers, please call 711 (Washington Relay) or email civil.rights@doh.wa.gov.