

A message from

Scott Lindquist, MD, MPH

State Epidemiologist for Communicable Diseases



An aerial photograph of Seattle, Washington, taken at sunset. The sun is low on the horizon, casting a warm, golden glow over the city and the surrounding water. The Space Needle is prominent on the right side of the frame, its structure silhouetted against the bright sky. The city's dense urban landscape is visible below, with numerous buildings and streets. The overall mood is serene and inspiring.

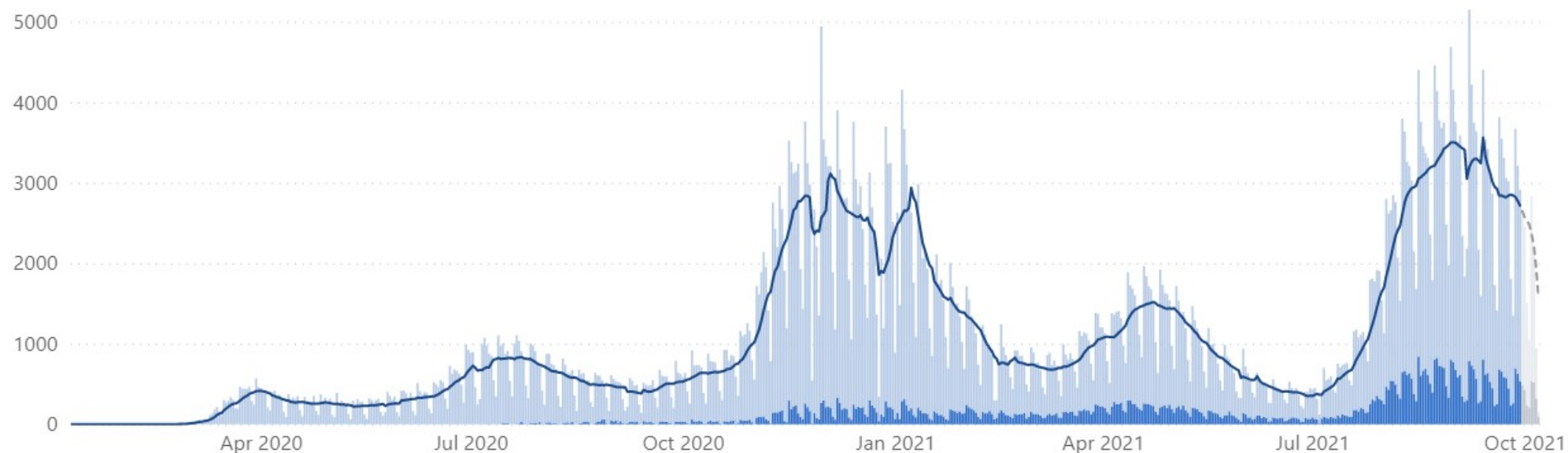
Health

*Where Equity,
Innovation, and
Engagement meet.*

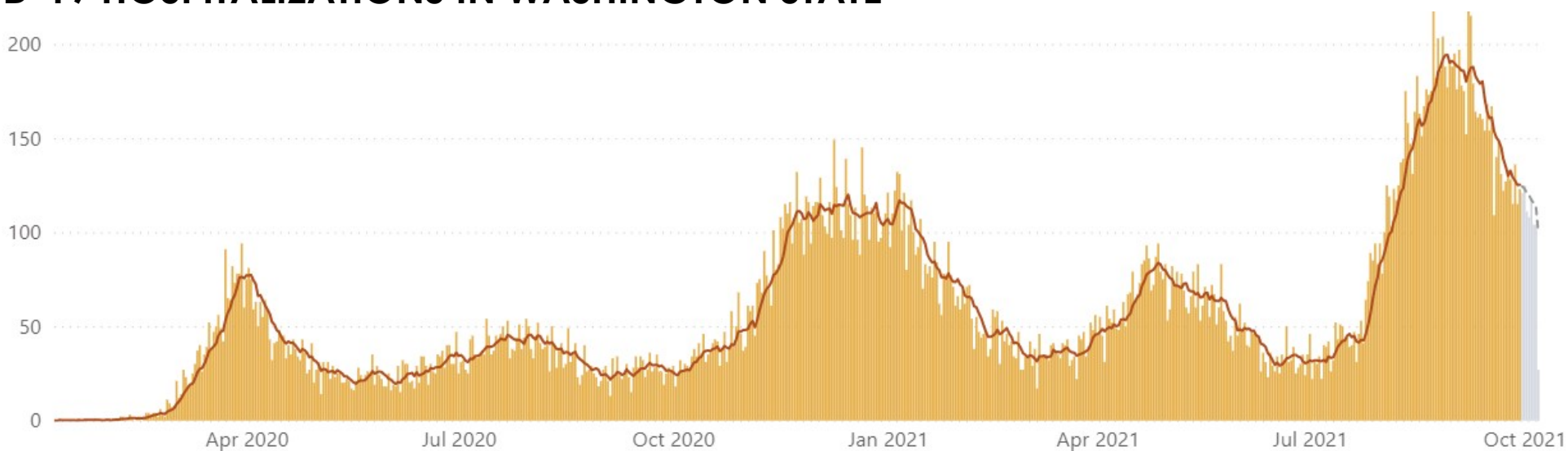
COVID-19 Cases in Washington State

COVID-19 CASES IN WASHINGTON STATE

Source <https://www.doh.wa.gov/Emergencies/COVID19/DataDashboard> (10/6/2021)



COVID-19 HOSPITALIZATIONS IN WASHINGTON STATE



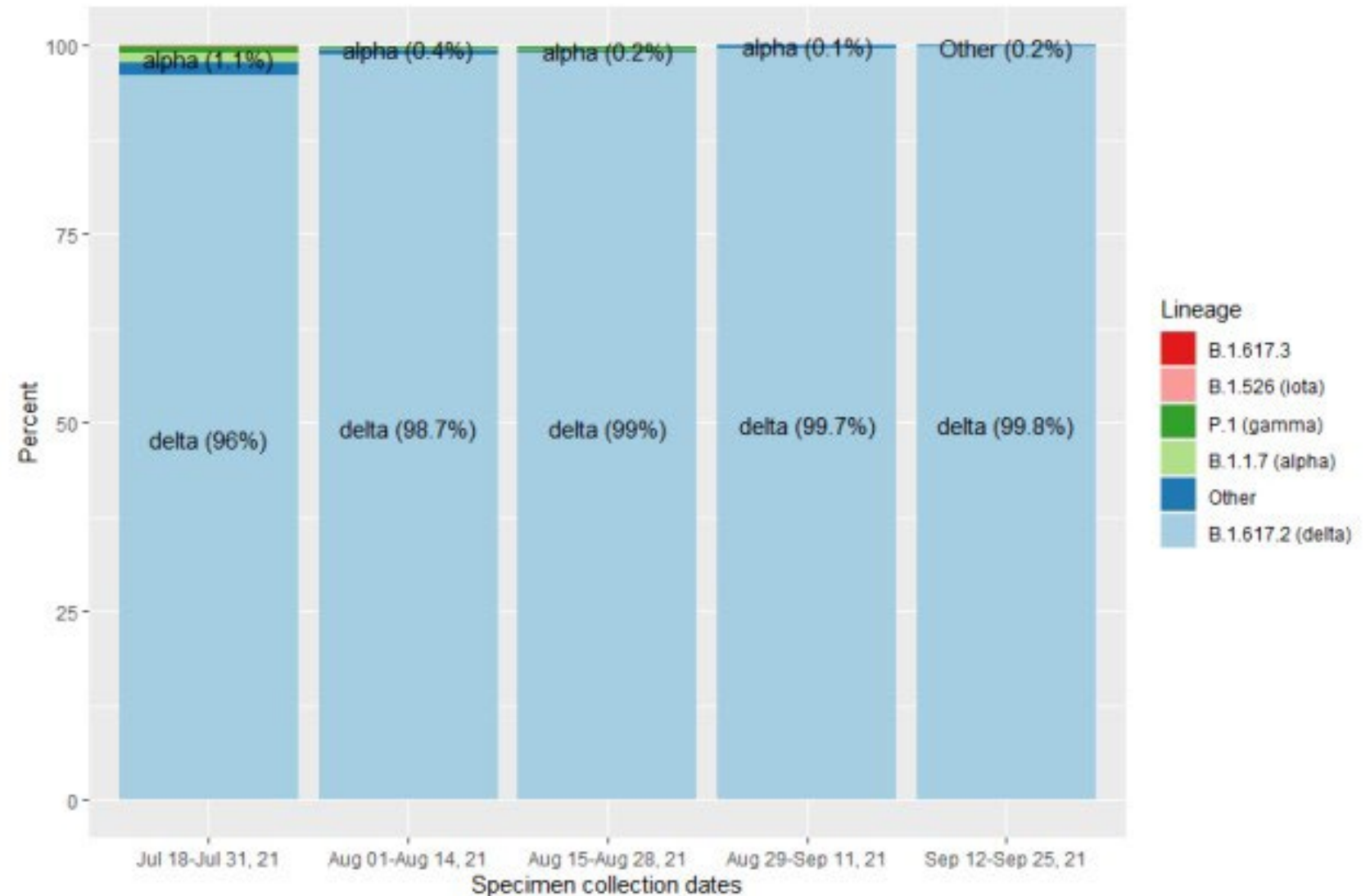
Delta

Spreads more than twice as easily than earlier strains.

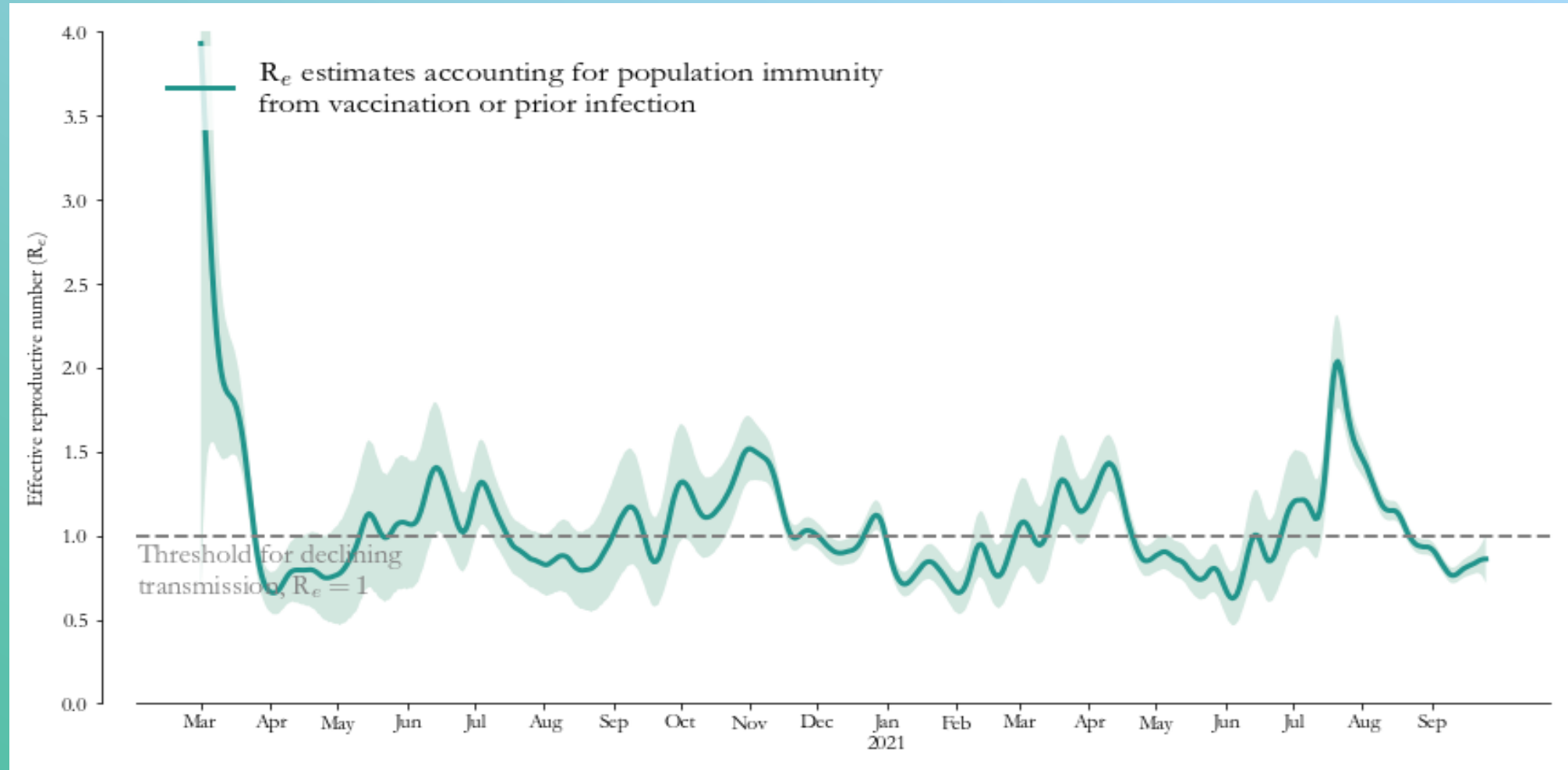
Recently surged to become the predominant variant in Washington.

Source:
<https://www.doh.wa.gov/Portals/1/Documents/1600/coronavirus/data-tables/420-316-SequencingAndVariantsReport.pdf> (9/22/2021)

BIWEEKLY PROPORTIONS OF THE MOST COMMON SARS-CoV-2 VARIANTS



R_e Estimate (Goal < 1.0)



Source : Modeling and Surveillance Update (10/01/2021)

COVID-19 Vaccines in Washington State

COVID-19 Vaccine Rollout in Washington State

Conceptually, vaccine rollout can be thought of as a three-legged stool: supply, logistics, and demand.

All three legs are necessary to be effective in balancing goals of getting as many Washingtonians vaccinated quickly and equitably. Any imbalance in the “legs” of the stool during different phases of vaccine rollout will lead to challenges in the ultimate goal of achieving adequate vaccine coverage across Washington.



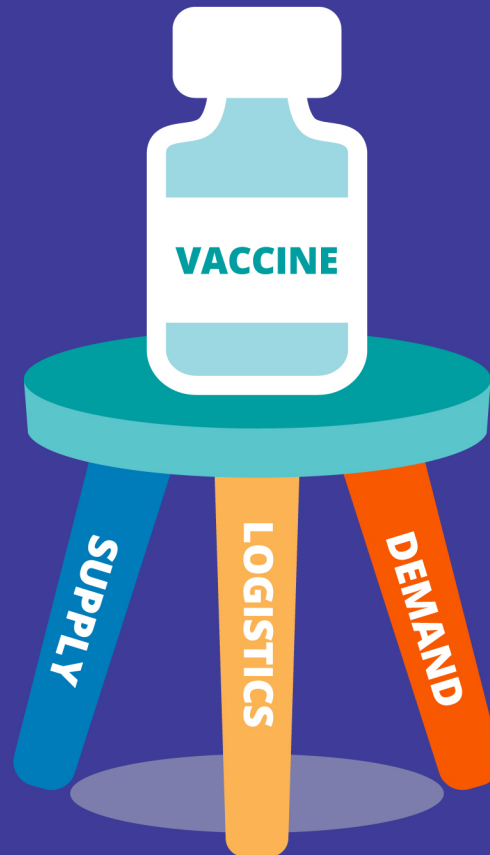
SUPPLY

Number of vaccine doses coming into state of Washington and then to local communities



LOGISTICS

Ability to administer vaccine doses when available in a timely and effective manner



DEMAND

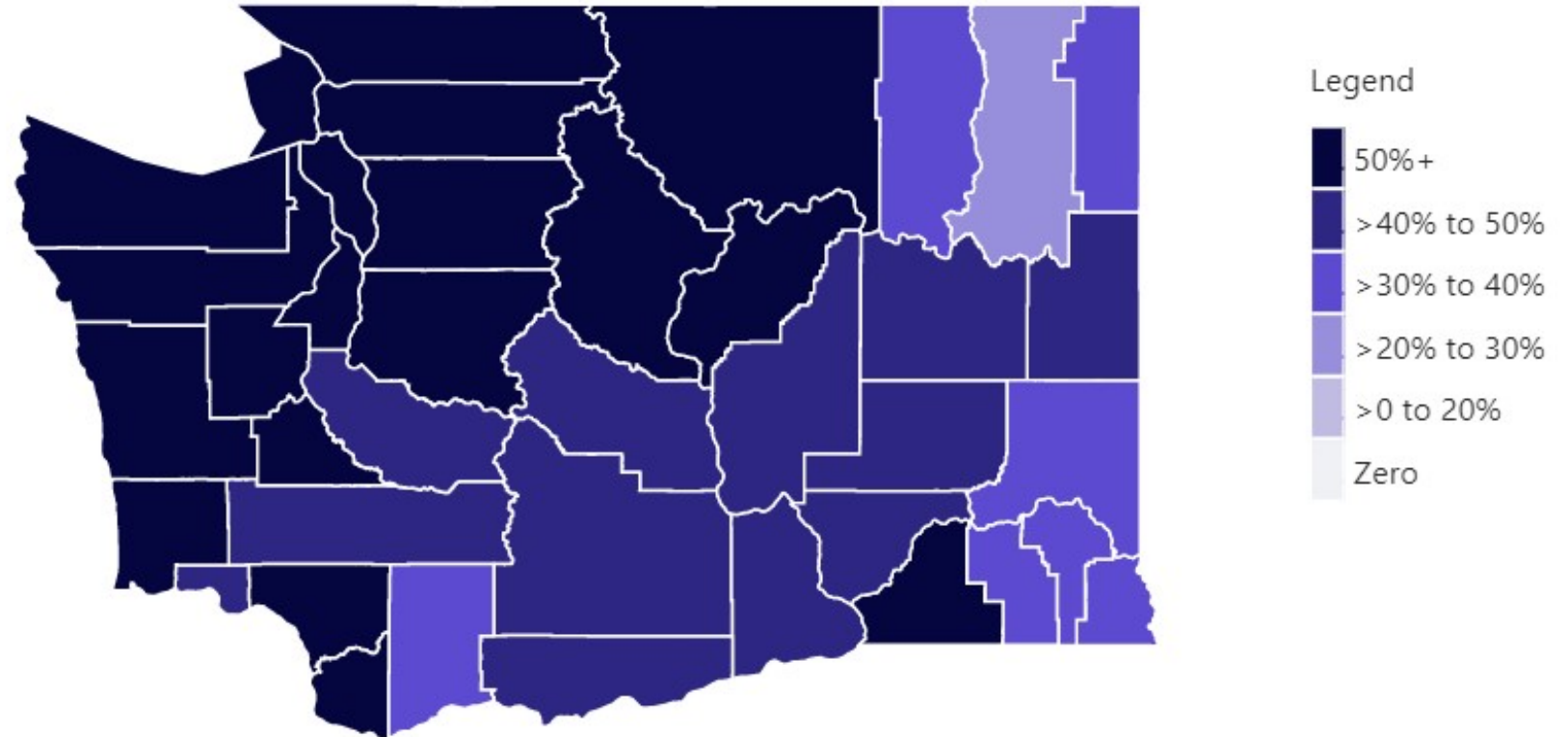
Willingness of Washingtonians to seek and/or receive vaccine when eligible and available

As of October 4,
almost
9.2million doses
of COVID-19 vaccine
have been given out to
more than
6.5million people



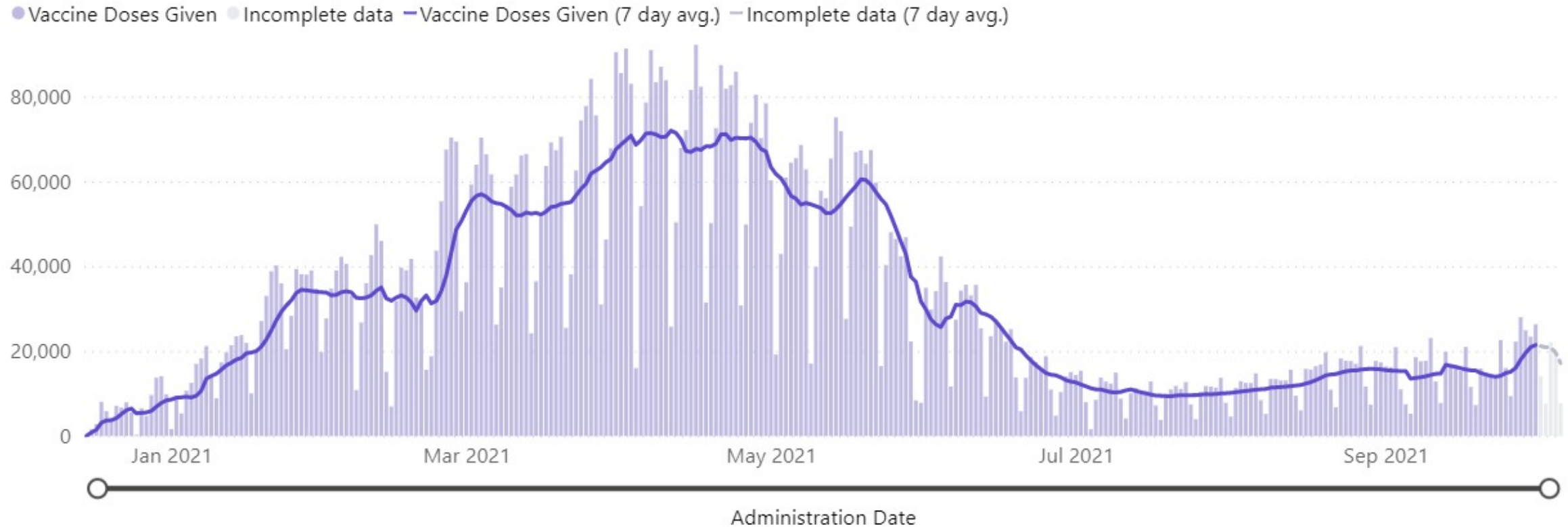
TOTAL POPULATION FULLY VACCINATED IN WASHINGTON STATE

Percent of Total Population Initiating Vaccination	63.8%
Percent of Total Population Fully Vaccinated	58.6%
Percent of Population Initiating Vaccination (16+)	76.2%
Percent of Population Fully Vaccinated (16+)	70.1%
Percent of Population Initiating Vaccination (12+)	74.8%
Percent of Population Fully Vaccinated (12+)	68.8%

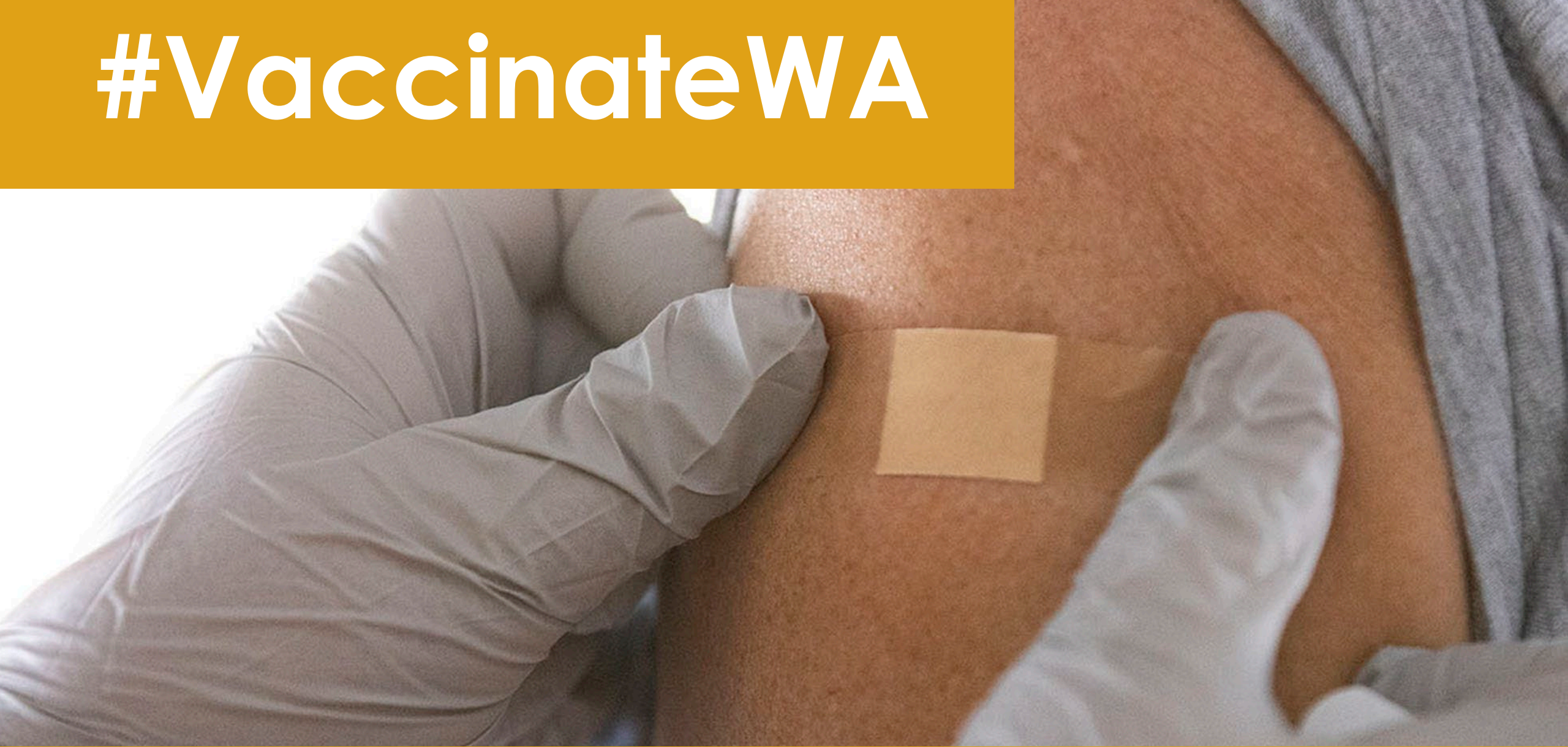


Source <https://www.doh.wa.gov/Emergencies/COVID19/DataDashboard> (10/6/2021)

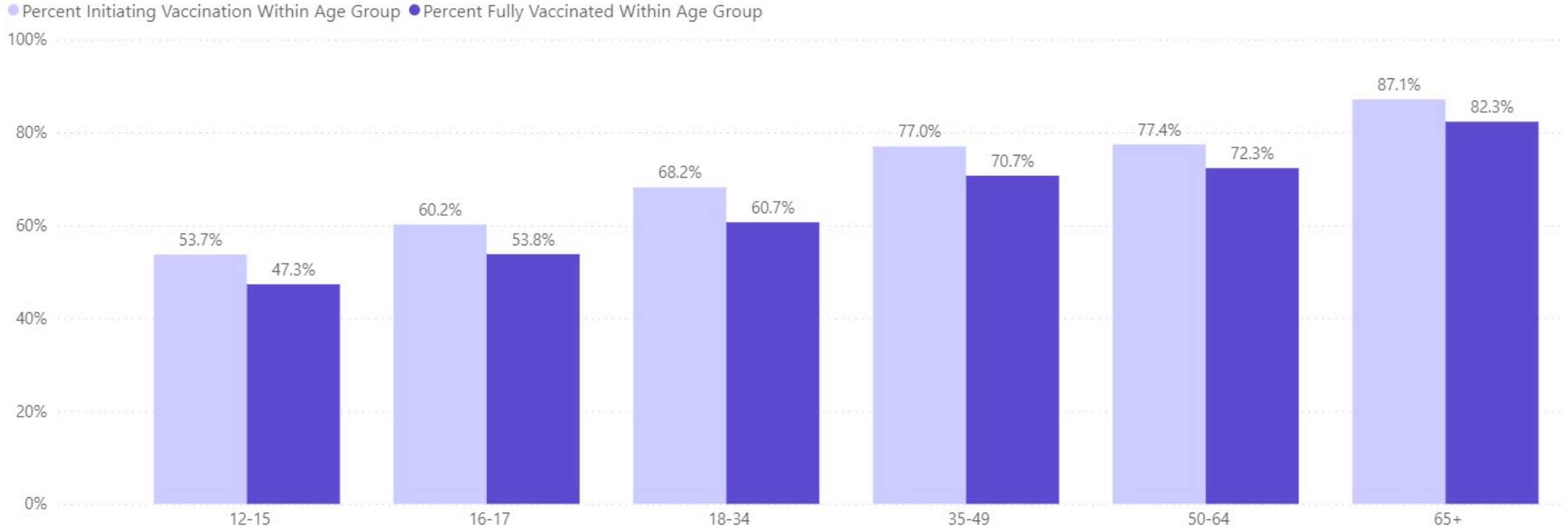
Vaccine Doses Given by Date in Washington



#VaccinateWA



Vaccinations by age group:



Source <https://www.doh.wa.gov/Emergencies/COVID19/DataDashboard> (10/6/2021)

Vaccinations by race/ethnicity:

State Level	County Level	PEOPLE INITIATING VACCINATIONS	PEOPLE FULLY VACCINATED	RACE/ETHNICITY OF PEOPLE FULLY VACCINATED (%)	WA POPULATION 12+ (%)	TOTAL WA POPULATION (%)
Total Number		4,887,020	4,490,114	100%		
Unknown Race/Ethnicity (% of Total)		340,100	290,417	6%	NA	NA
Total with Race/Ethnicity Available		4,546,920	4,199,697	100%	100%	100%
White*		2,803,534	2,617,008	62%	70%	67%
Asian*		516,026	486,244	12%	10%	9%
Hispanic		481,107	424,094	10%	11%	13%
Other Race**		468,057	424,193	10%	NA	NA
Black*		165,722	147,235	4%	4%	4%
American Indian or Alaska Native*		61,434	55,313	1%	1%	1%
Native Hawaiian or Other Pacific Islander*		40,044	35,517	1%	1%	1%
Multiracial*		10,996	10,093	0%	3%	4%

*Non-Hispanic

**Non-Hispanic. Includes people reporting Other race or more than one race. See Learn More above for information on reporting these data.



Boosters and Pediatric Vaccines

U.S. Food and Drug Administration's Vaccines and Related Biological Products Advisory Committee (VRBPAC) and Centers for Disease Control and Prevention Advisory Committee on Immunization Practices (ACIP) meeting to discuss:

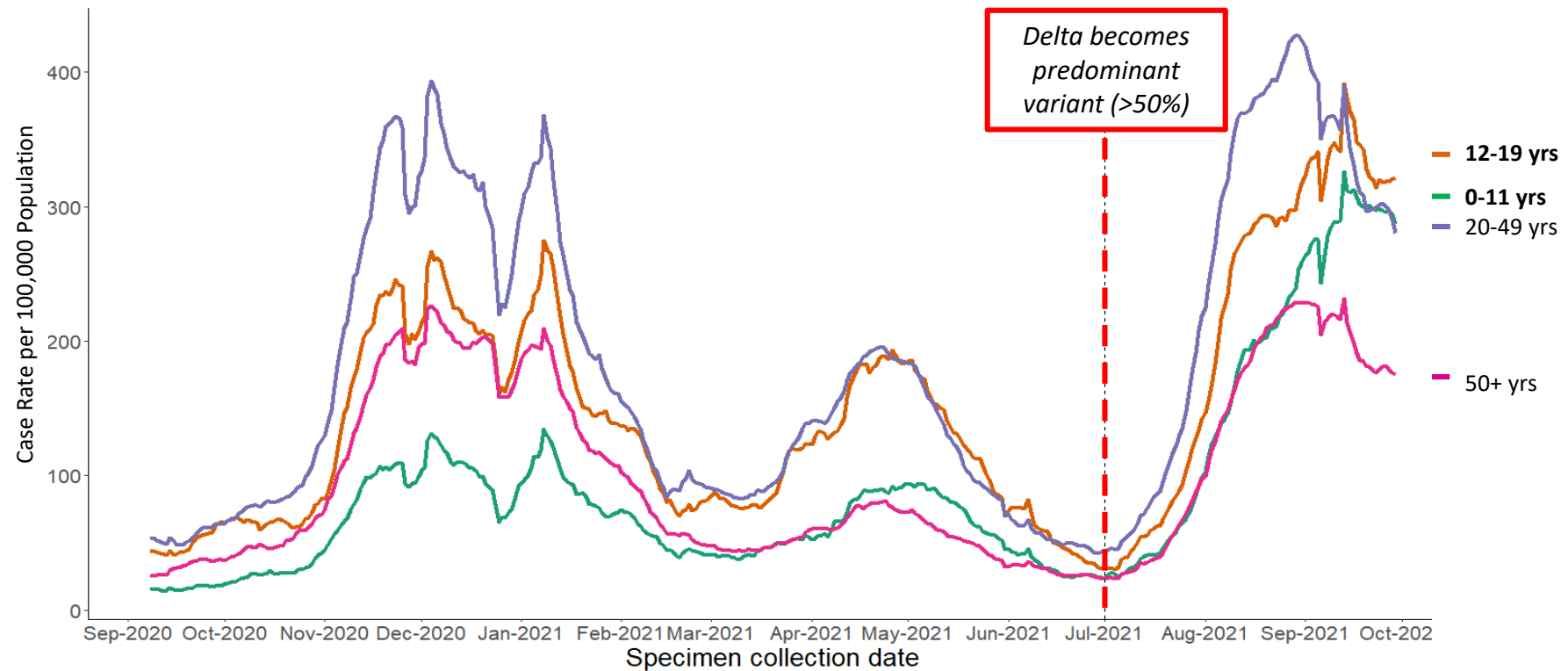
- Moderna and J&J boosters
(VERBPAC Oct 14 & 15; ACIP Oct 25 & 26)
- Use of a booster of a different vaccine than the one used in original series
(VERBPAC Oct 15; ACIP Oct 25 & 26)
- Pfizer's submission on Covid-19 shot for 5- to 11-year-old children
(VERBPAC Oct 26; ACIP Nov 2 & 3)

COVID-19 Cases in Children Aged 0-19 in Washington State

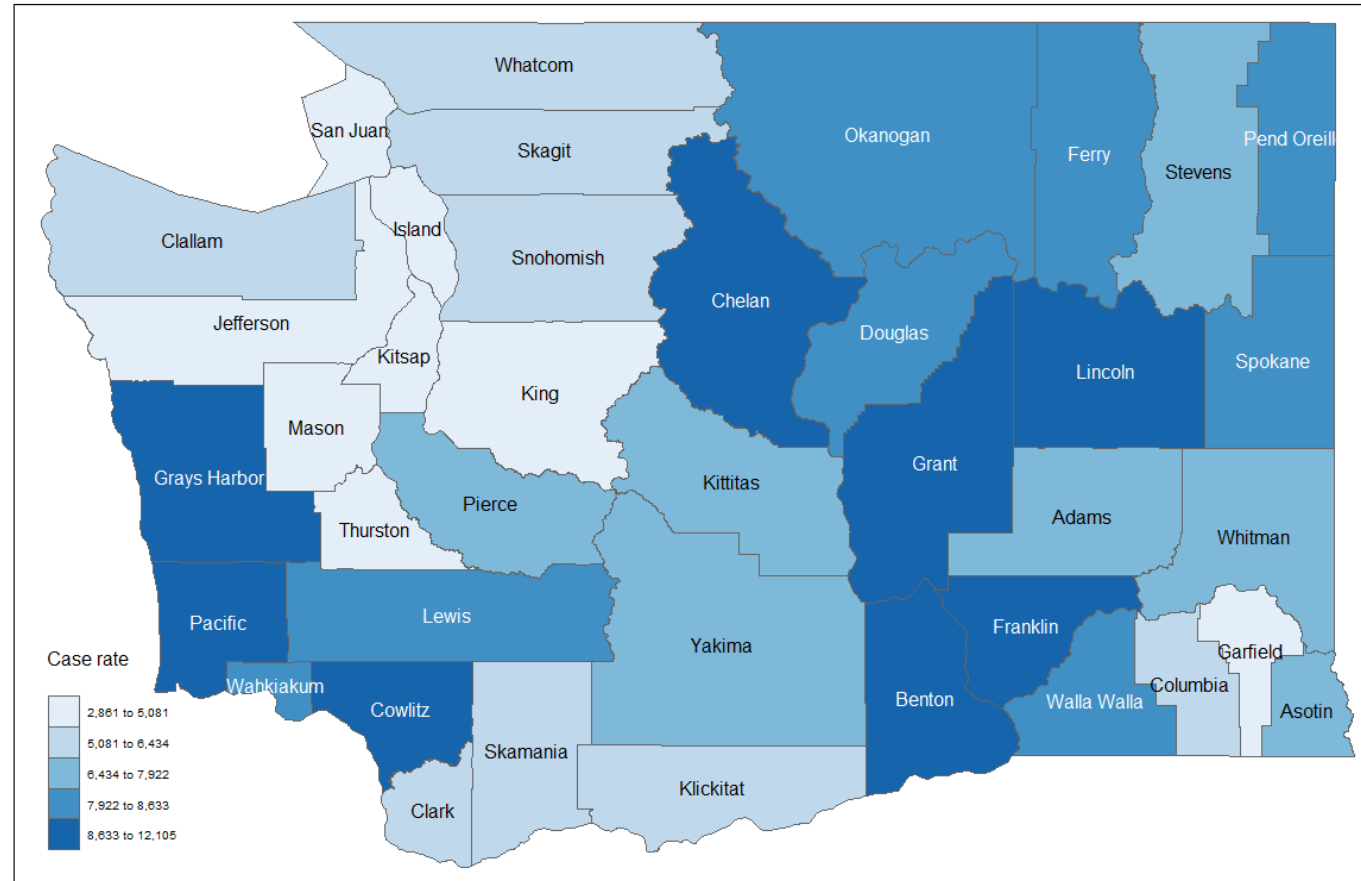
Burden of COVID-19 in Children 0-19 Years, Washington State

- As of October 6, 2021: **134,471 pediatric COVID-19 cases**, representing 20% of all cases.
- **1 in 5 cases were in children** younger than 19 years of age since the *beginning of the pandemic*
- **Close to 1 in 3 cases were in children** younger than 19 years of age in the month of *September 2021*
- As of August 31, 2021, **61 confirmed cases of MIS-C** (Multisystem Inflammatory Syndrome in Children) have been reported in Washington

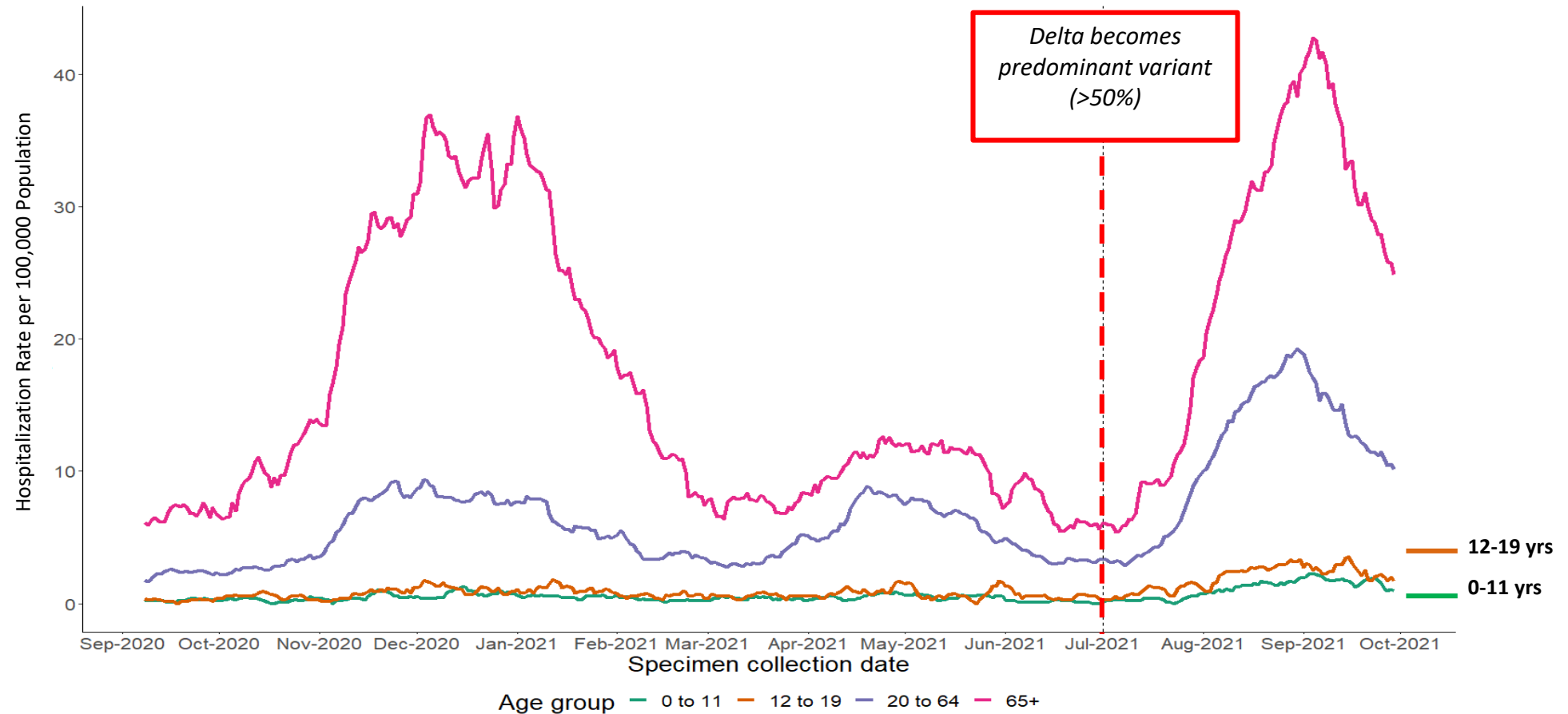
7-Day Case Rates by Age Group, WA State September 2020 – September 2021



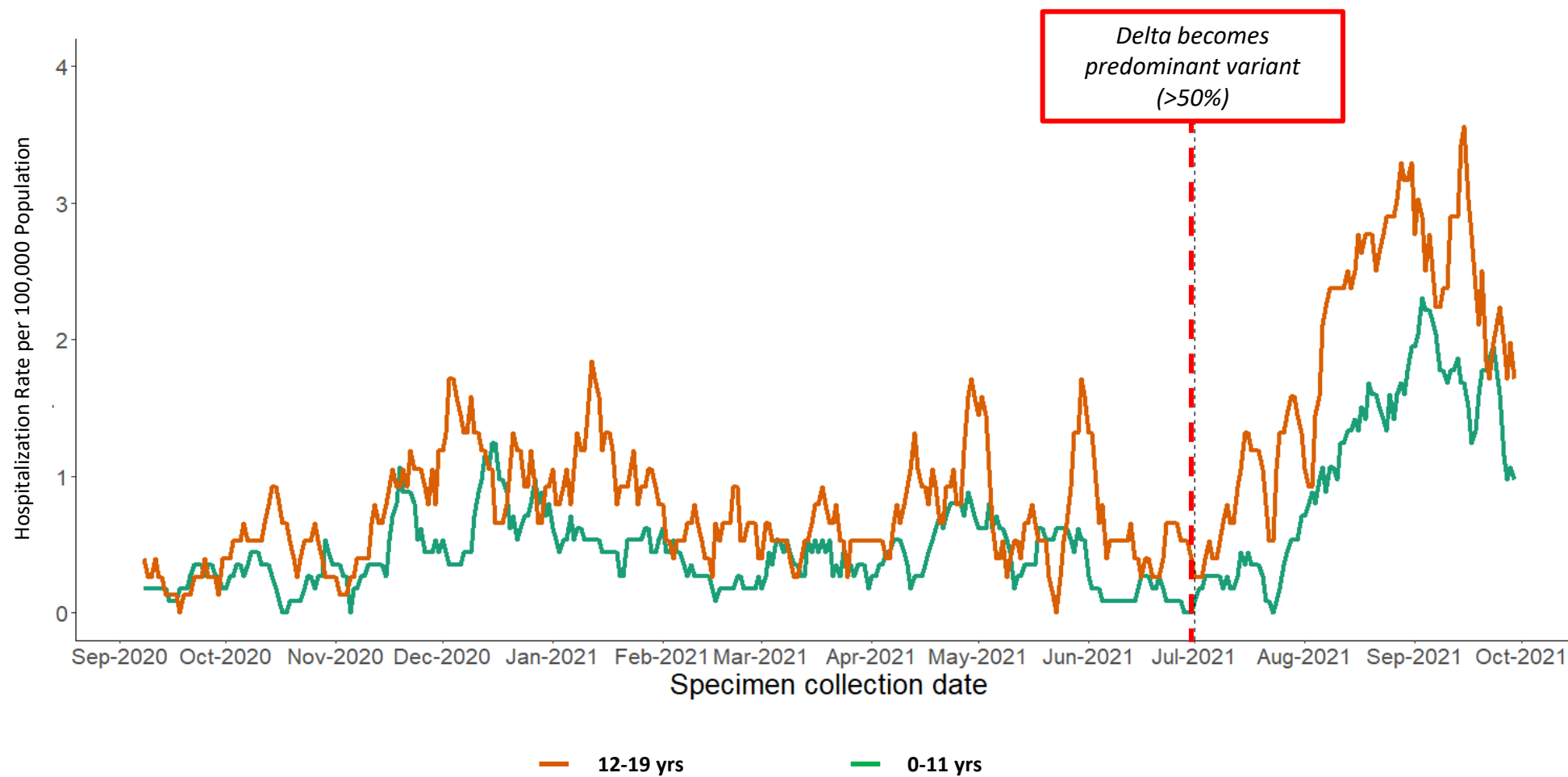
Annual Case Rate per 100,000 Population in Children 0-19 Years October 2020 – September 2021



7-Day Hospitalization Rates by Age Group, WA State September 2020 – September 2021



7-Day Hospitalization Rates by Age Group, WA State September 2020 – September 2021



Deaths Due to COVID-19 in Children 0-19 Years, Washington State

- **Thirteen (13) deaths due to COVID-19 in children** 0-19 years of age between July 2020 and August 2021
 - 3 children 0-11 years old
 - 10 children 12-19 years old
- **Four (30%) Hispanic**
- **Six (46%) Non-Hispanic White**

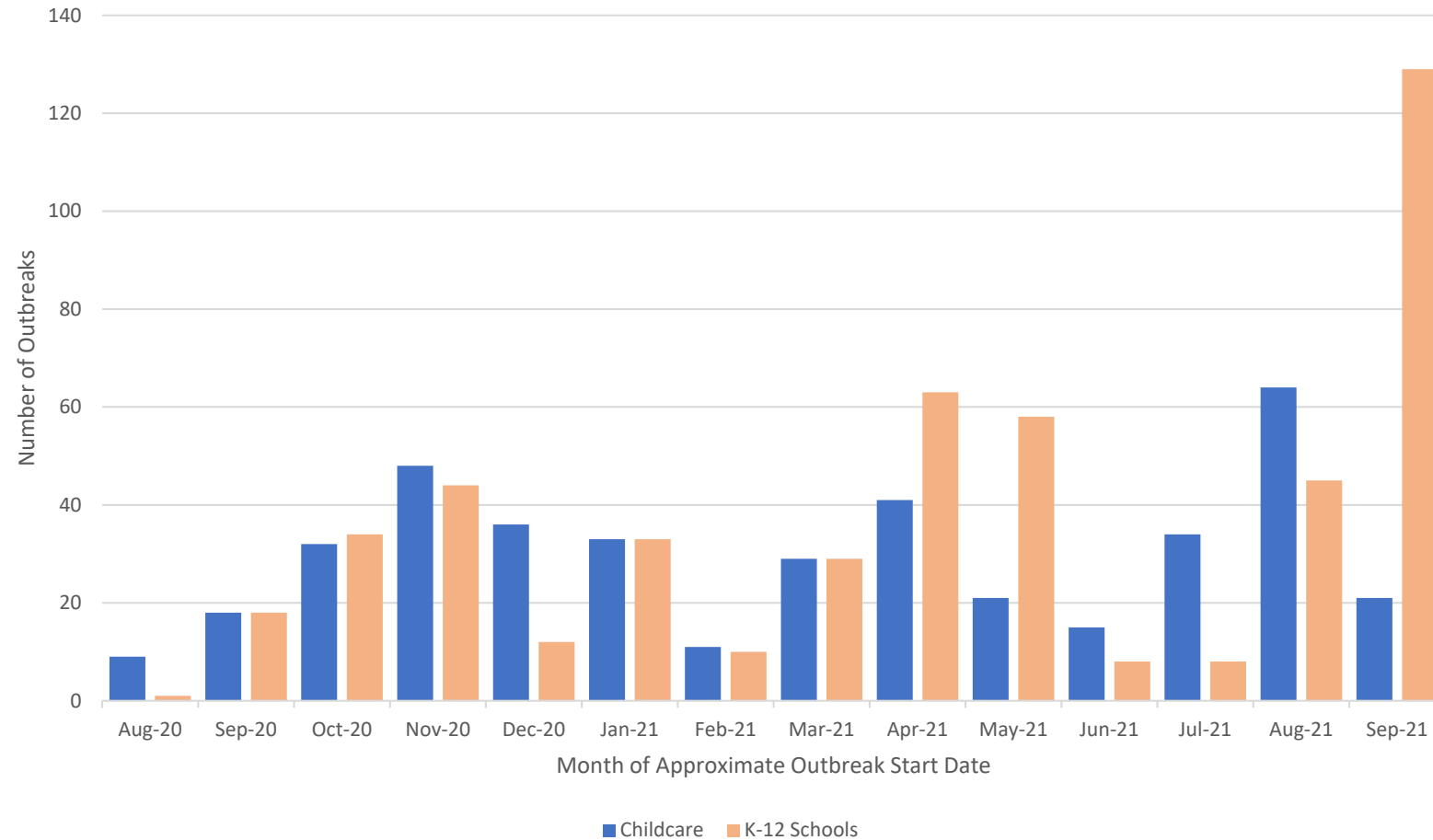
COVID-19 Outbreaks and Cases in Childcare and K-12 Schools in Washington State

COVID-19 Outbreaks and Cases in Childcare and K-12 Schools, Washington State

- **963 COVID-19 outbreaks in childcare and K-12 schools** between February 2020 and September 2021.
 - 17% of all non-healthcare outbreaks
 - By far the highest number of outbreaks of all non-healthcare settings (second is in restaurant/food service facilities, with 500 outbreaks)
- **4,530 COVID-19 cases associated with these outbreaks**
 - 2,931 (65%) of the cases associated with childcare and K-12 school outbreaks were in children

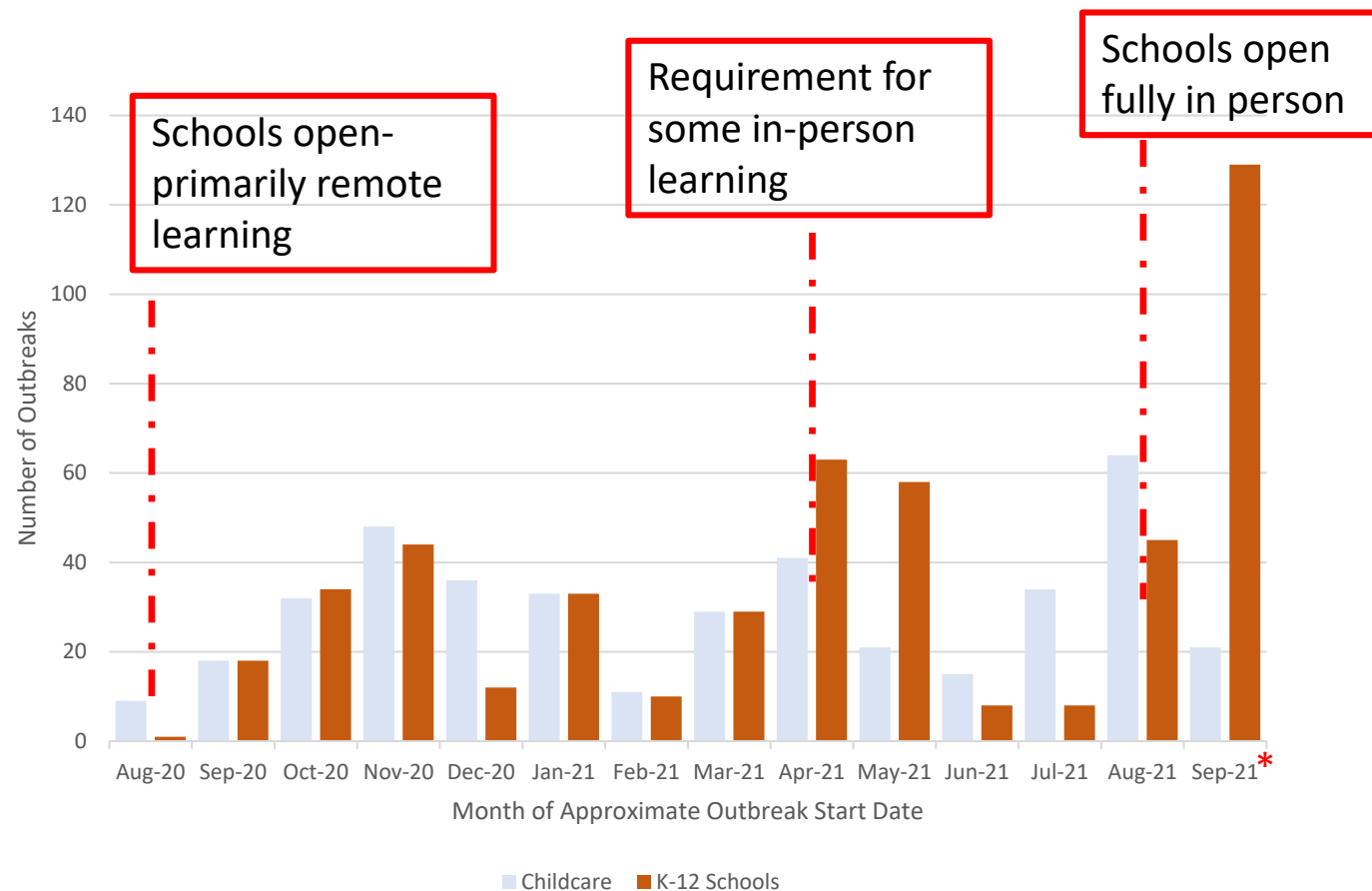
COVID-19 outbreaks in childcare and K-12 school

August 2020 – September 2021



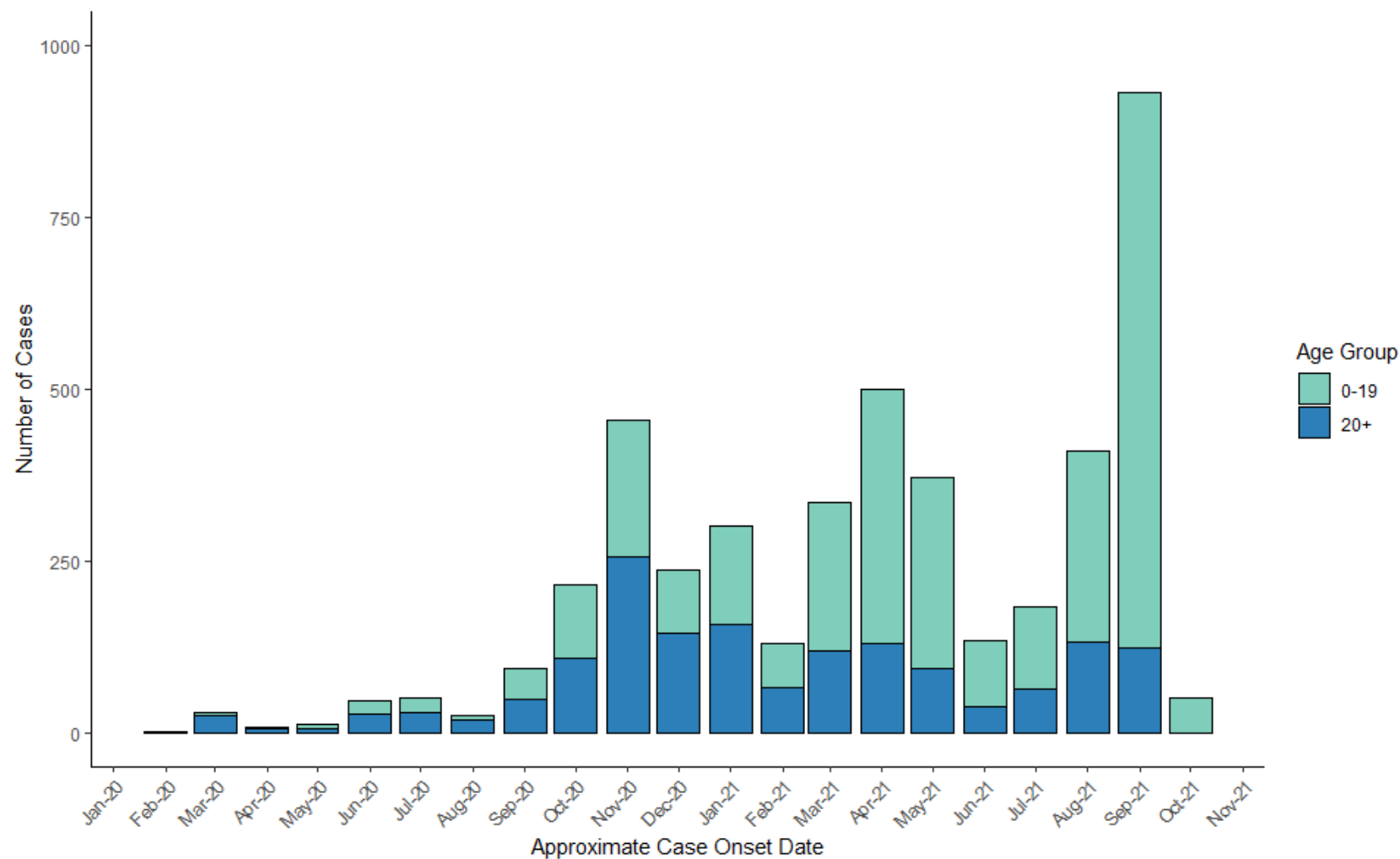
COVID-19 outbreaks in childcare and K-12 school

August 2020 – September 2021



*September data are preliminary – LHJs still finalizing investigation and reporting to WA DOH

COVID-19 Cases Associated with Outbreaks in Childcares & K-12 Schools (Jan 2020- Sep 2021)



COVID-19 Cases Associated with Outbreaks in Childcares & K-12 Schools (Jan 2020- Sep 2021) N= 4,530

Demographic		N	Percent (%)
Age	< 5	796	18
	05-09	802	18
	10-13	441	10
	14-19	892	20
	20-29	413	9
	30-39	439	10
	40-49	364	8
	50-59	247	5
	60-69	118	3
	70+	18	0
Race	AIAN	38	1
	Asian	141	3
	White	1887	42
	Black	172	4
	Hispanic	512	11
	Multiracial	167	4
	NHOPI	10	0
	Other	24	1
	Unknown	1579	35
Sex	Female	2572	57
	Male	1854	41
	Other	<10	0
	Unknown	100	2
Hospitalizations		49	1
Deaths		<10	0

2,931 (65%) pediatric COVID-19 cases associated with childcare and K-12 school outbreaks

Other Pediatric Impacts

- In the United States, one child loses a primary or secondary caregiver for every four COVID-19 deaths
 - More than 140,000 children <18 years or 1 in 500 children affected
 - Children of racial and ethnic minorities accounted for 65% of those who lost a primary caregiver vs. 39% of the population

<https://www.nih.gov/news-events/news-releases/more-140000-us-children-lost-primary-or-secondary-caregiver-due-covid-19-pandemic>

Summary

- In the past 2 months, pediatric cases and hospitalizations have risen to the highest point they've been since the beginning of the pandemic and are declining more slowly than other age groups
- Children 0-19 years have had more severe disease in the past 2 months than at any other time during the pandemic
- Childcare and K-12 school outbreaks combined represent the largest category of COVID-19 outbreaks in Washington State



To request this document in another format, call 1-800-525-0127. Deaf or hard of hearing customers, please call 711 (Washington Relay) or email civil.rights@doh.wa.gov.