

Thurston County Public Health and Social Services Update

Presented By:

David Bayne, MPH (Director)

Dimyana Abdelmalek, MD, MPH (Health Officer)

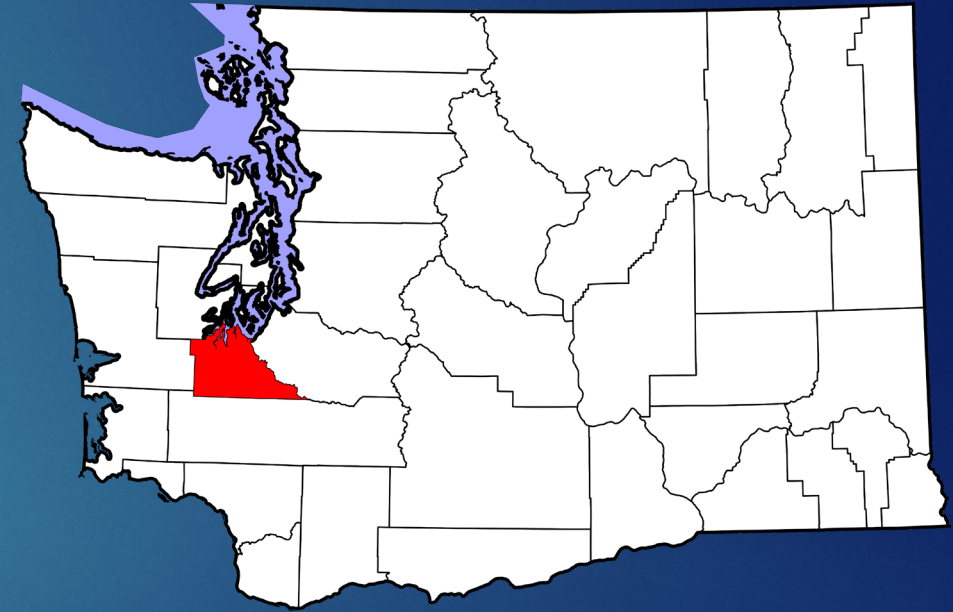
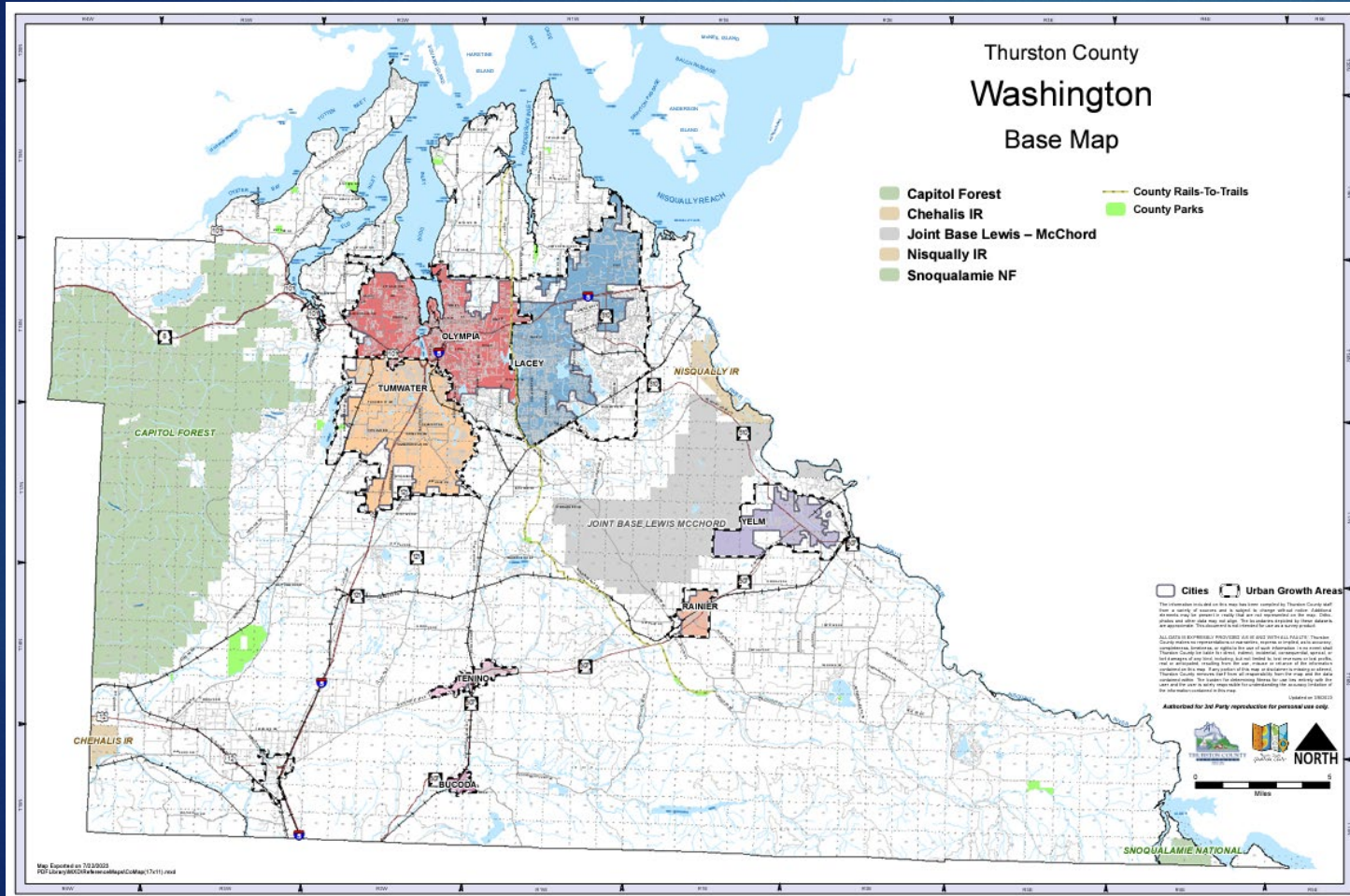


TCPHSS MISSION STATEMENT



“WORKING TOGETHER TO ACHIEVE THE HIGHEST LEVEL
OF HEALTH AND WELL-BEING FOR EVERYONE.”

THURSTON COUNTY, WA



THURSTON COUNTY

- ▶ Population: 303,400¹
- ▶ Land Area: 722.5 sq mile¹
- ▶ Population Density: 419.93 people/ sq mile¹
- ▶ Largest City: Lacey²
- ▶ Largest Employer: Washington State Government
- ▶ Median Household Income: \$81,501²
- ▶ Percent of Population Living in Poverty: 9.9%²

- 1. DATA FROM OFFICE OF FINANCIAL MANAGEMENT ACCESSED ONLINE AUGUST 1, 2023:
[HTTPS://OFM.WA.GOV/SITES/DEFAULT/FILES/PUBLIC/DATARESEARCH/POP/APRIL1/OFM_APRIL1_PRESS_RELEASE.PDF](https://ofm.wa.gov/sites/default/files/public/dataresearch/pop/april1/ofm_april1_press_release.pdf)
- 2. US CENSUS DATA QUICKFACTS ACCESSED ONLINE AUGUST 1, 2023:
[HTTPS://WWW.CENSUS.GOV/QUICKFACTS/FACT/TABLE/WA_THURSTONCOUNTYWASHINGTON,US/PST045222](https://www.census.gov/quickfacts/fact/table/wa_thurstoncountywashington,us/pst045222)



POPULATION CHARACTERISTICS

Population	Thurston County	Washington State
Under age 5	5.2%	5.5%
Under age 18	20.6%	21.1%
Over age 65	18.9%	16.8%

US CENSUS DATA QUICKFACTS ACCESSED ONLINE AUGUST 1, 2023: <https://www.census.gov/quickfacts/fact/table/WA,thurstoncountywashington,US/PST045222>

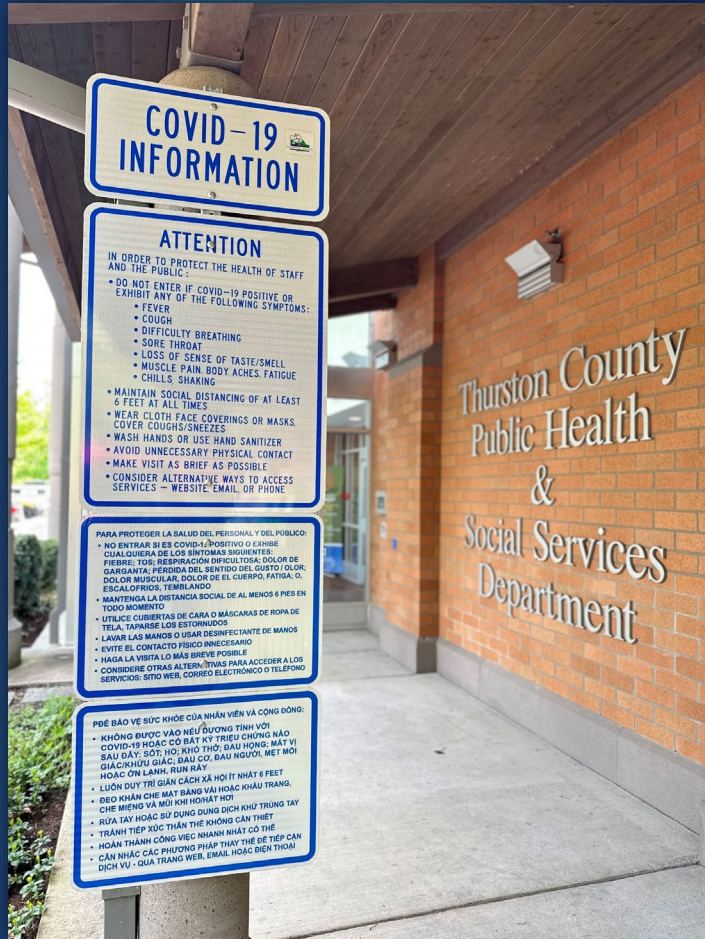
POPULATION CHARACTERISTICS

Population	Thurston County	Washington State
White alone	80.1%	76.8%
Black or African American alone	4.1%	4.6%
American Indian or Alaska Native alone	1.8%	2.0%
Asian alone	6.6%	10.5%
Native Hawaiian or Other Pacific Islander alone	1.1%	0.8%
Two or More Races Present	6.4%	5.3%
Hispanic or Latino	10.5%	14.0%
White alone, not Hispanic or Latino	71.9%	65.1%

THURSTON COUNTY PUBLIC HEALTH AND SOCIAL SERVICES DIVISIONS AND PROGRAM AREAS

- ▶ Community Health and Wellness
- ▶ Disease Control and Prevention
- ▶ Developmental Disabilities
- ▶ Environmental Health
- ▶ Housing and Homelessness Prevention
- ▶ Maternal Child Health
- ▶ Specialized Recreation
- ▶ Treatment Sales Tax
- ▶ Veterans Services
- ▶ Vital Services

CHALLENGES



- ▶ Emerging from the pandemic:
 - ▶ The COVID-19 pandemic was a primary area of focus in terms of staff and department resources
 - ▶ Mitigating the impacts of COVID-19 provided the opportunity to further develop community partnerships
 - ▶ Engaging the community
 - ▶ Utilizing experiences from the pandemic to strengthen our department and programs
- ▶ Department transformation

AREAS OF FOCUS

- ▶ Identifying community needs
- ▶ Supporting and strengthening our existing programs
- ▶ Communicable Diseases including Sexually Transmitted Infections, TB, and others
- ▶ Maternal Child Health including mental health and injury prevention activities
- ▶ Environmental Health adaptability to new challenges
- ▶ Substance use and overdoses
- ▶ Immunizations
- ▶ Housing and Houselessness
- ▶ Preparing for the next emergency

NEXT STEPS

- ▶ Continuing to support those who live, learn, work, and play in Thurston County to achieve the best health possible
- ▶ Identifying areas where we can move the needle
- ▶ Continuing community engagement efforts
- ▶ Using data informed community-based approaches to tackling public health challenges
- ▶ Continuing to work with federal, state, and local partners

Thurston County Public Health and Social Services

Any Questions or Comments?

Thank You!

► CONTACT US:

Public Health and Social Services

412 Lilly Rd. NE, Olympia, WA 98506-5132

Phone: 360-867-2500

Fax: 360-867-2601



www.thurstoncountywa.gov/phss