



Chelan-Douglas Health District

200 Valley Mall Parkway, East Wenatchee, WA 98802

Chelan-Douglas Health District Report to State Board of Health

Luke D. Davies and Dr. James Wallace
Health Administrator and Health Officer

10/9/2023



Chelan and Douglas County Demographics

- Population of Chelan-Douglas ~ 133,000 residents
 - Chelan County ~81,500
 - Douglas County ~44,500
- Notable Demographics
 - Higher rate of retirees than the state average
 - 30% of the population is Hispanic/Latino
 - Persons in Poverty 10.8%
- Chelan and Douglas Counties attract between 3.5 and 4 million annual visitors
- Agriculture draws over 5,000-10,000 migrant workers to the area annually





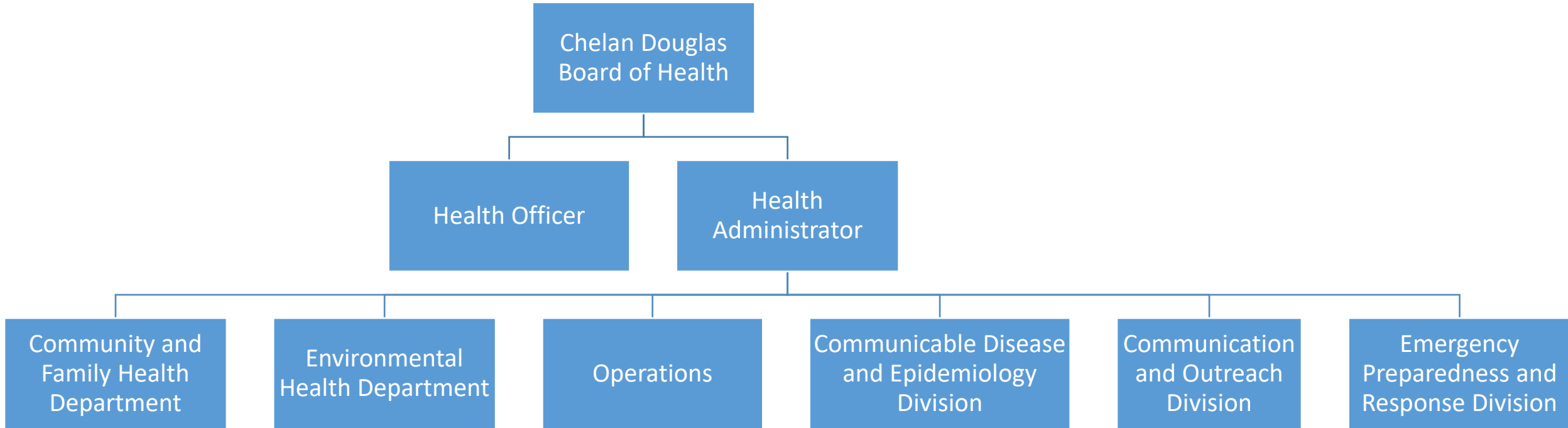
Chelan-Douglas Health District Overview

- Chelan-Douglas Health District is a Multi-County Special Purpose District covering Chelan and Douglas Counties.
- 2020 Budget: \$3,465,000
- 2020 Employees: 39
- 2023 Budget: \$6,558,000
- 2023 Employees: 56
- Mission: To protect and improve the health of individuals and communities in Chelan and Douglas Counties through the promotion of health and the prevention of disease and injury





Chelan-Douglas Departments and Divisions





Chelan-Douglas Health District Current Structure

- Departments
 - Community and Family Health
 - Environmental Health
- Cross Cutting Divisions
 - Communicable Disease and Epidemiology
 - Communications and outreach
 - Emergency Planning and Response





Community and Family Health Department (CFH)

- Community and Family Health Programs and Services
 - Access to Baby and Child Dentistry (ABCD)
 - Children and youth with Special Health Care Needs (CYSHCN)
 - Child Care Consultation
 - Health Education
 - Nurse- Family Partnership[®] (NFP)
 - Women, Infants, and Children (WIC)
 - Public Health Nutrition



CFH - Access to Baby and Child Dentistry (ABCD)

Access to Baby and Child Dentistry (ABCD) is a system of care in Washington state that connects Apple Health (Medicaid) insured children with specially-trained dentists in their communities.

Program Funding Source- Health Care Authority

Program Eligibility:

- Children 5 years old or younger
- Children under 13 with a disability and a DDA indicator
- Enrolled in Apple Health (Medicaid)
- Live in Washington State



CDHD currently has 196 children enrolled in the program- highest enrollment since 2013
We serve Chelan, Douglas, and Okanogan Counties.



CFH - Children and Youth with Special Needs (CYSHCN)

Children and Youth with Special Health Care Needs (CYSHCN) Program promotes culturally competent, integrated systems of care for CYSHCN and their families.

Program Funding Source- Federal Grant (MCHBG) through our consolidated contract with DOH

- This a *FREE and voluntary* program for families with a child under 18 years of age with or at-risk of a chronic medical condition or special health care need who require health and related services of a type and amount beyond what is generally required.

CDHD is currently serving 24 clients.



CFH - Children and Youth with Special Needs (CYSHCN)

Common Diagnosis Include:

- Diabetes
- Autism spectrum disorders
- Down Syndrome
- Muscular Dystrophy
- Congenital heart disease/heart defects
- Developmental delays
- Elevated blood lead
- Depression/Anxiety
- ADD/ADHD





CFH - Child Care Consultation

Child Care Consultation provides nurse consultation for licensed child care centers serving infants.

CDHD contracts with 2 childcare centers and bills them for services provided

Child Care Consult Nurse provides the following:

- Assistance with program planning and policy review
- Provides training and consultation for staff and parents
- Conducts formal assessments as requested (i.e. developmental screenings, lead screenings)
- Assists in developing program objectives for health and wellness
- Provides referrals as needed for children and families who require additional resources



CFH - Health Education

Health Education Develops and implements public information and other health education activities for CDHD's public health programs

Program Funding Source- FPHS funding

Health Education activities:

- Collaborates with CDHD Personal Health staff to identify, develop and provide health education to providers, clients, media and the community.

Recent Projects:

- Diabetes Support Group for monolingual Spanish clients
- Partnering with Wenatchee School District after school program to offer health education classes for parents of children participating in the program
- Outreach to Senior Center about offering health education services to local seniors
- Cooking classes titled "Cooking with a Food Box" at the YWCA for women who are living in the YWCA supported housing



CFH - Nurse Family Partnership[®] (NFP)

Nurse-Family Partnership[®] (NFP) is an evidence-based, community health program with over 40 years of evidence showing significant improvements in the health and lives of first-time moms and their children.

Program Funding Source- Contract with DCYF (general state funds) & agency discretionary funds

Program Eligibility:

- First time *pregnant* mom
- Less than 28 weeks pregnant
- Medicaid or WIC eligible

Currently Have 64 Mothers enrolled with a waiting list





CFH - Nurse Family Partnership[®] (NFP)

Chelan-Douglas NFP Moms

Median Age 22; 80% unmarried; 89% on Medicaid

Annual Household income \$9,928

NFP Chelan Douglas outcomes

- 94.3% Babies born at a healthy weight
- 94.4% Babies born full term
- 91.4% Mothers initiated breastfeeding
- 100% Babies received all immunizations by 12 months
- 62% of clients employed postpartum



Source: *Aggregate data provided by NSO (Quarter 2 data from 07/01/22-06/30/23)



CFH - Women, Infants, Children Nutrition Program (WIC)

WIC aims to safeguard the health of low-income women, infants, and children by providing nutritious foods to supplement diets, information on healthy eating, and referrals to health care.

- Program Funding Source- Federal Grant through consolidated contract with WA DOH
- **Program Eligibility:**
 - Live in Washington State, and
 - Are pregnant, a new mother, or a child under five years of age, and
 - Have a medical or nutritional need, and
 - Meet the [income eligibility guidelines](#)
- **We have increased our authorized caseload from 585 in 2022 to 645 in 2023.**
- **We serve clients in offices located in East Wenatchee and Leavenworth.**



CFH - Women, Infants, Children Nutrition Program (WIC)

WIC Services Include:

- Health screenings (hemoglobin and **lead screenings**)
- Nutrition and health education
- Breastfeeding support (education and breast pumps)
- Help getting other services (ABCD, CYSHCN, NFP etc.)
- Monthly WIC benefits to purchase food
- Farmers Market Nutrition Program- During summer months, eligible WIC clients (pregnant women, postpartum women, children over 1 year) can receive checks for the purchase of up to \$28.00 (maximum of \$84.00 per family if there are at least 3 people on WIC) of farmer market fruits and vegetables at authorized Farmers Markets.





Environmental Health Department (EH)

- Environmental Health Programs
 - Food Safety Program
 - Water Recreation Program
 - School Program
 - Onsite, Land Use & Drinking Water Programs
 - Solid and Hazardous Waste Program



EH– Food Safety Program

Food Safety Permits and inspects 825 food establishments annually

- CDHD conducts 2 inspections annually with high risk establishments and once a year for low risk
 - Examples of high risk FEs are: full service restaurants, fast food restaurants, multi department grocery stores and school kitchens
 - Examples of low risk FEs are: espresso stands, small grocery stores and markets with one or two departments and bed & breakfasts
- CDHD also conducts 450 temporary food inspections annually

Food Establishment Permit Type	Quantity (2022)
High Risk (F1&F2)	549
Low Risk (F3&F4)	256
Temporary Food	450
Donated Food Distribution Organization	20



EH– Water Recreation Program

CDHD permits and inspects 210 public water recreation facilities annually

- Public swimming pools and spas
- Hotel/motel swimming pools and spas
- Apartment/Condo/HOA swimming pools and spas
- Wading pools
- Water parks
- Splash pads





EH– School Program

Revitalized our School program to provide support to 50 public and private schools

- Routine Inspections focus on:
 - Food inspections
 - Maintenance and building safety
 - Adequate supply and properly stocked hand sinks
 - Ventilation
 - Temperature control
 - Sound control
 - Lighting
 - General safety





EH– Onsite Sewage System, Land Use, & Drinking Water Programs

This program regulates Onsite Septic, Land Use, and Drinking water for both counties

- CDHD issues approximately 400 Septic permits annually
 - CDHD manages 130 service providers that include installers, pumpers, operations, and maintenance service providers
 - Review ~215 land use applications annually
 - Review ~200 private and public water applications annually
-
- We also have approximately 456 Group B water systems
 - We conduct approximately 20 sanitary survey's annually for Group A systems on behalf of Washington DOH





EH– Solid and Hazardous Waste Program

CDHD conducts application reviews in conjunction with Washington State Department of Ecology for all new and expanding solid waste facilities.

CDHD has 19 permitted Solid Waste Facilities

- Municipal waste landfill
- Demolition & Inert waste landfills
- Recycling center
- Closed landfills
- Compost facilities
- Transfer stations
- Moderate risk waste facility





EH– Solid and Hazardous Waste Program

CDHD also responds to approximately 75 solid waste complaints annually

CDHD has started a hazardous waste program that is focused on educating small business on hazardous chemical waste disposal

Includes:

- Hotels
- Dry Cleaners
- Auto body repair shops
- Orchards





Communicable Disease and Epidemiology

This new division has been created to combine our communicable disease programs with epidemiology to improve surveillance and assessment

Activities Include:

- Immunizations
- Notifiable Conditions Disease Surveillance
- TB surveillance and DOTS
- Outbreak Investigations
- Community Health Assessment
- Hospital Acquired Infections





Communicable Disease and Epidemiology

North Central Washington Epidemiological Consortium covers Region 7 with support from the University of Washington and Village Reach

Activities Include:

- Regional Mental Health Assessment
- Regional Community Health Assessment Systematic Review for 2023
- Regional Dashboards for Public health Indicators
- Outbreak Investigations
- Workforce Development Activities





Communications and Outreach

CDHD has grown its Communications and Outreach from 1.5 employees and a working budget of \$5,000 annually to a team of 5 people with an annual communications budget of \$50,000

CDHD has expanded traditional media coverage on:

- Radio
- Billboards
- Newspaper
- Television
- Direct Mail

Increased Health Campaigns





Communications and Outreach

CDHD has expanded Digital Media presence as well @ChelanDouglasHD



5,064 Followers

- 81% female
- 19% male
- 1,568 in Wenatchee
- 718 in East Wenatchee
- 241 in Chelan
- 216 in Leavenworth



503 Followers

- 78% female
- 22% male
- 42% in Wenatchee
- 17% in East Wenatchee
- 5% in Leavenworth
- 4% in Malaga



669 Followers

- 41 Tweets
- 4,783 Tweet impressions
- 275 Profile visits



85 Subscribers

- 66% female
- 34% males
- 70 videos (Eng. & Spn.)
- 24,147 views



Communications and Outreach

CDHD's Outreach team participates in over 100 events annually





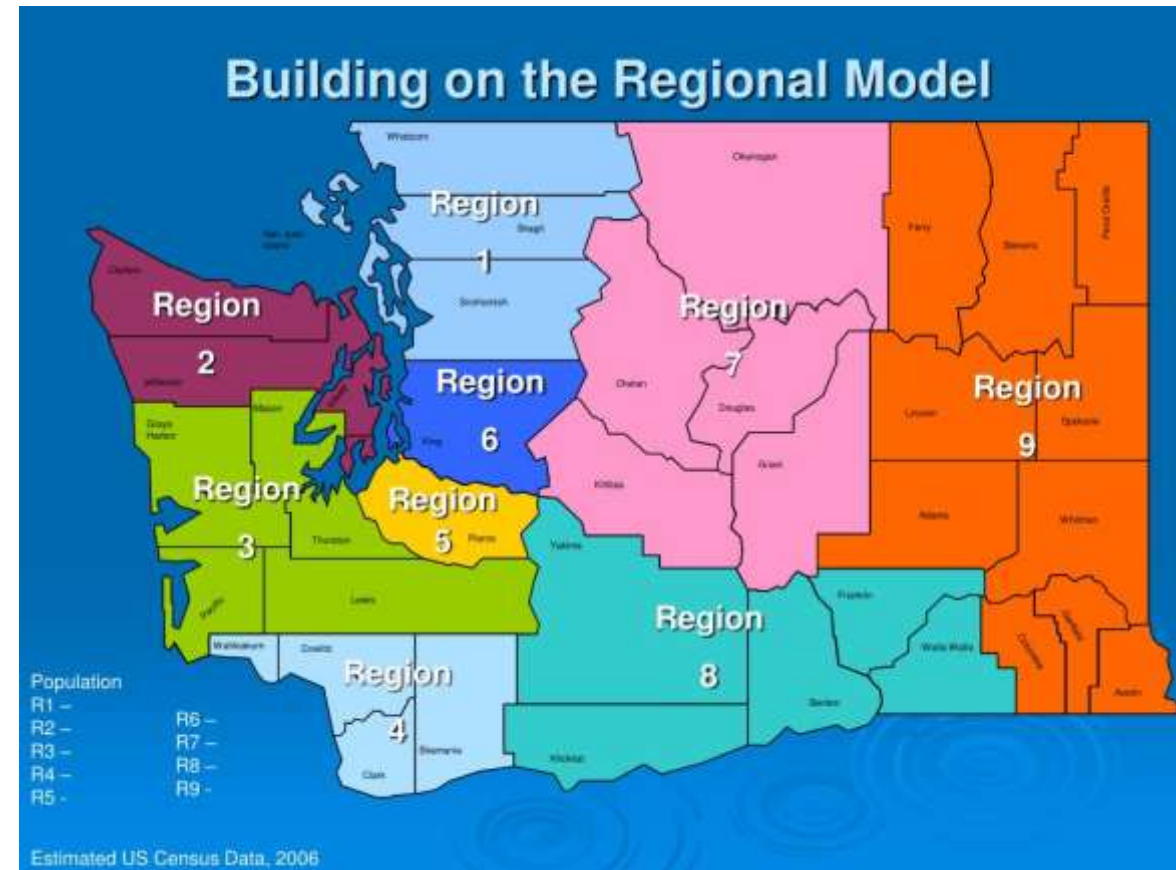
Emergency Planning and Response

CDHD is the Public Health Emergency and Response lead for Chelan, Douglas, Grant, Okanogan, and Kittitas Counties

We are expanding local capacity:

- Regional Emergency Coordinator
- Local Emergency Coordinator
- Public Information Officer

Region 7 Health Care Alliance





Emergency Planning and Response

Public Health Emergency Response in North Central Washington includes:

- COVID-19 Response
- Wildfire Smoke Response
- Extreme Weather Event Coordination
- Disease Outbreak Response





Emergency Planning and Response

Finalized COVID-19 After Action Report to be published December 1st 2023

Post COVID-19 Activities to include:

- Multi-Agency ICS Training
- Establish a Medical Reserve Corps for Chelan and Douglas Counties
- Incorporate lessons learned from COVID-19 into future plans





On Behalf of CDHD Thank You!

