



Paulina López
Duwamish River Community Coalition (DRCC)
paulina@drcc.org



COAST SALISH PLACE NAMES

VILLAGE SITES

- A. *hax'widi* Place where something is grown or sprouts
- B. *ah'widi* Slough for testing thickness of a canoe hull
- C. *hidi* Throwing or scattering something
- D. *pooh'oh'oh'* Brush spread on water
- E. *hah'wah'* Prairie
- F. *ah'wah'* A place to turn around or to cross over
- G. *lu'wah'* Herring house
- H. *ah'wah'* Water at the head of the bay
- I. *ah'wah'* Place where one heads
- J. *ah'wah'* Confluence of waters
- K. *ah'wah'* Confluence of waters

WATER-RELATED PLACES

- 1. *ah'wah'* Elderberry house
- 2. *ah'wah'* Face
- 3. *ah'wah'* Crooked
- 4. *ah'wah'* Piece of rock
- 5. *ah'wah'* Bitter lake
- 6. *ah'wah'* A place to go to calm down
- 7. *ah'wah'* babwah'
- 8. *ah'wah'* Place where people are sent
- 9. *ah'wah'* Place for red pine
- 10. *ah'wah'* Place of dripping water
- 11. *ah'wah'* Channel watercourse
- 12. *ah'wah'* Green lake
- 13. *ah'wah'* Large, having lots of water
- 14. *ah'wah'* Place to spirit journey
- 15. *ah'wah'* Piece of fog
- 16. *ah'wah'* Quiet
- 17. *ah'wah'* Place where one whips the water
- 18. *ah'wah'* To lift a canoe
- 19. *ah'wah'* Fathoms
- 20. *ah'wah'* Hang or show over
- 21. *ah'wah'* Small lake
- 22. *ah'wah'* Water for food eater
- 23. *ah'wah'* A trail descends into the water
- 24. *ah'wah'* Where it emerges by bubbling
- 25. *ah'wah'* Yellowish, greenish rashes on the point of land
- 26. *ah'wah'* Trout
- 27. *ah'wah'* Place of a supernatural monster "horned snake"
- 28. *ah'wah'* A marsh with choppy water where oxen could be pushed through
- 29. *ah'wah'* Place of spearing
- 30. *ah'wah'* Cracking creek over flat lands
- 31. *ah'wah'* Frame for drying fish
- 32. *ah'wah'* Captured
- 33. *ah'wah'* Little bands at the end
- 34. *ah'wah'* Under the house
- 35. *ah'wah'* Lake
- 36. *ah'wah'* Dockings (something which emits a squeak or peep)
- 37. *ah'wah'* Marshes

Place names are oldest proof of presence, archives of meaning, evidence of history, and a reference for treaties and other legal connections to territory. The place names listed map written in the Salish languages of the Coast Salish people, as drawn from records who worked with ethnographers in the early twentieth century. From the work of linguists and scholars such as the late V.I. Bailey, L.H. Burpee, and the work of Southern Lushootseed linguist, Suzanne (Honey Jo) Bond and Arthur (Clem) Hayes.

duwamish NORTH

- Selected Village Sites
- Water-Related Places
- Other Villages
- Other Named Places
- Upland Forests
Western hemlock, western red cedar, Douglas fir, and hardy broadleaf species
- Moorland Forests
Red alder, light maple, black cottonwood, and other species
- Prairies
Open areas, broken into small patches, often used for grazing
- Freshwater Wetlands and Bogs
Wetlands, open water, sloughs, swamps, and other aquatic habitats
- Saltwater Wetlands
Wetlands, open water, sloughs, swamps, and other aquatic habitats
- Tidalflats
Wetlands, open water, sloughs, swamps, and other aquatic habitats
- Rivers and Creeks
Freshwater, saltwater, and other water bodies
- Lakes and Puget Sound
Wetlands, open water, sloughs, swamps, and other aquatic habitats
- Modern Shoreline

This map is an integrative photo-realistic and hand-drawn rendering of the Duwamish area in the mid-19th century, just prior to non-Indigenous settlement, based on archival data by the Puget Sound River History Project. Continue the Puget Sound River History Project. This map is an integrative photo-realistic and hand-drawn rendering of the Duwamish area in the mid-19th century, just prior to non-Indigenous settlement, based on archival data by the Puget Sound River History Project. Continue the Puget Sound River History Project. This map is an integrative photo-realistic and hand-drawn rendering of the Duwamish area in the mid-19th century, just prior to non-Indigenous settlement, based on archival data by the Puget Sound River History Project. Continue the Puget Sound River History Project.

SEATTLE: DISCOVER AND EXPLORE PAST LANDSCAPE

THE WATERLINES

The Duwamish River ECOLOGICAL AND CULTURAL RENEWAL

The Duwamish River and the land around it has a rich history. It has been a central part of what is now South Seattle's ecosystem for thousands of years, present and future.





1892

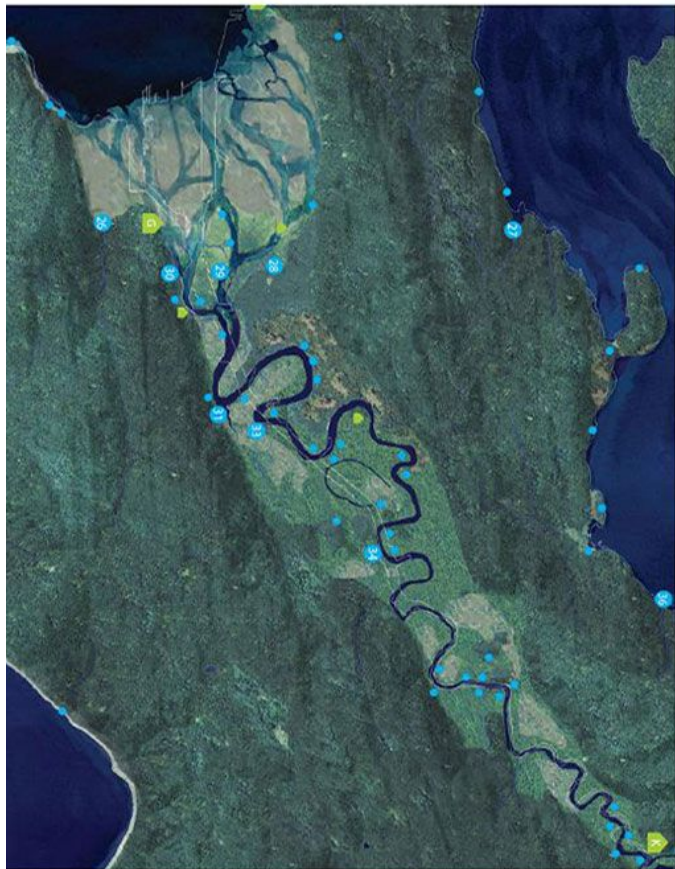
PEACEFUL HOME OF
THE DUWAMISH TRIBE

Kikisoblu (Princess Angeline) - Daughter of Chief Seattle

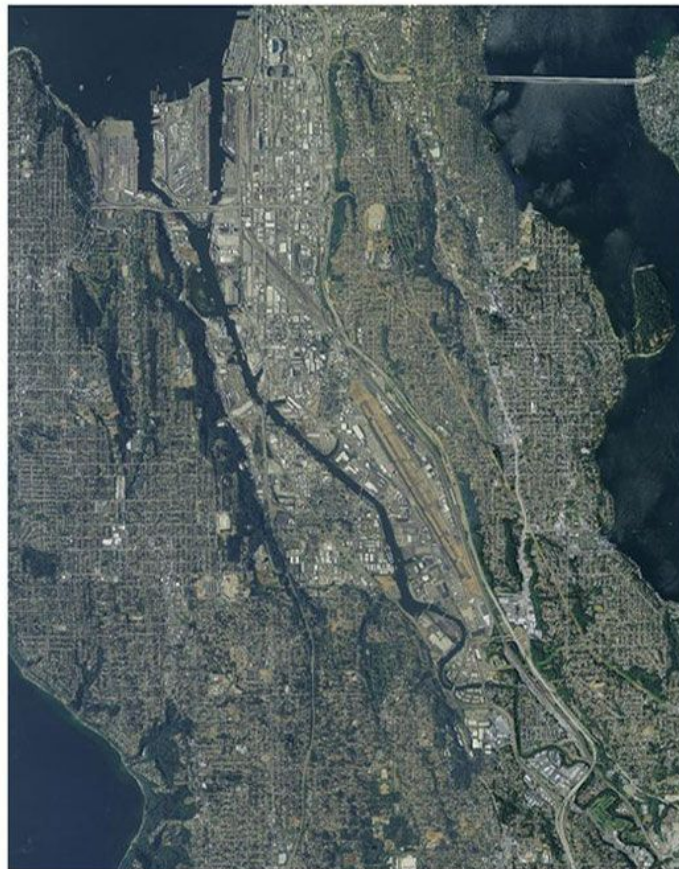


2001

ONE OF THE NATION'S MOST
TOXIC RIVERS



Mid-1800s

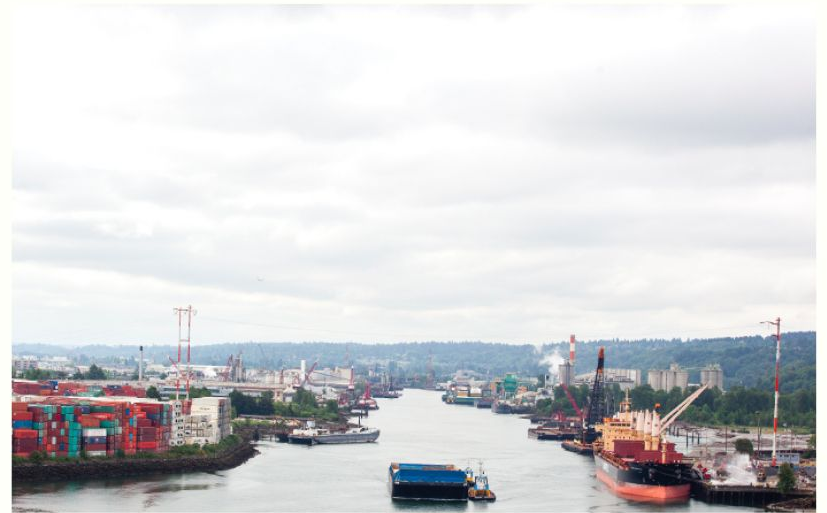
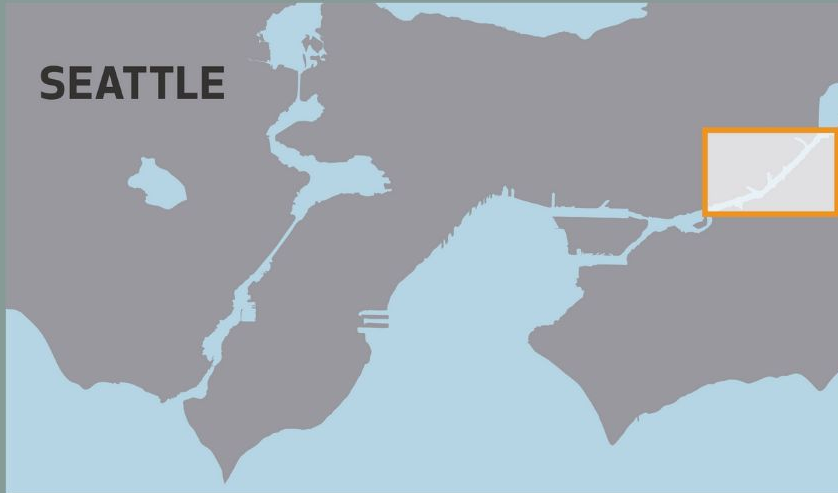


Today

1 Mile

Duwamish Valley | South Seattle

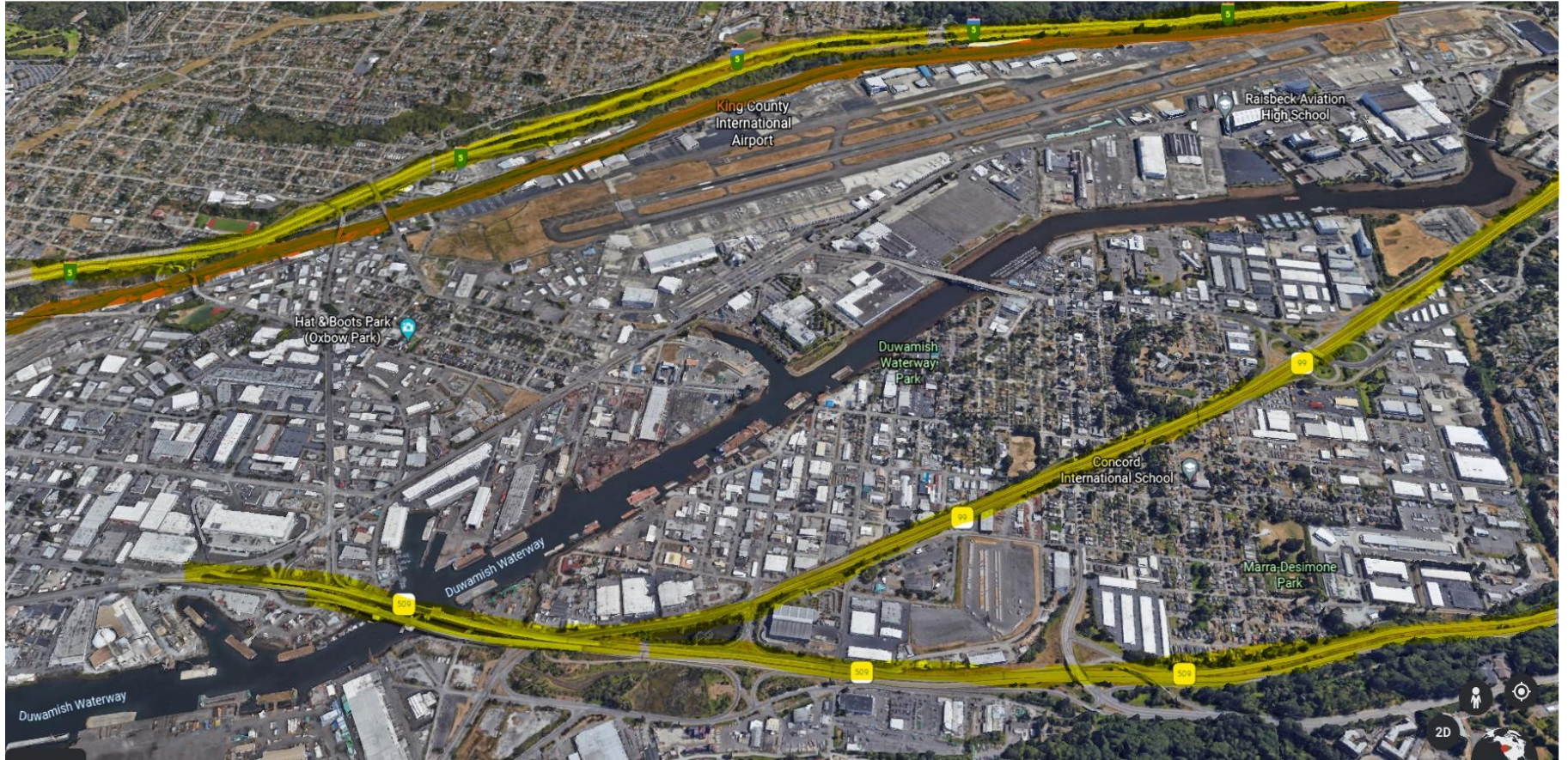
The Duwamish Valley, a Resilient Community



Top Photo: The River, Kramer Janders

Bottom Photo: The Duwamish Valley, Paul Joseph Brown

The Duwamish Valley, Seattle WA



“The Duwamish River is our river”



PERSONS OF COLOR

FIRST LANGUAGE OTHER THAN ENGLISH

PEOPLE UNDER 18 OF AGE

SOUTH PARK

38%

54.1%

31.4%

CITYWIDE

33%

22%

15%



One River, One Community, One Home

Established in 2001, the Duwamish River Cleanup Coalition/TAG (DRCC/TAG), also doing business as Duwamish River Community Coalition provides resources, knowledge, and action to build more just environmental futures.

Our Mission:

Elevate the voice of those impacted by the Duwamish River pollution and other environmental injustices for a clean, healthy, equitable environment for people and wildlife . We promote place-keeping and prioritize community capacity and resilience.



Duwamish River Cleanup Coalition



Protecting the
Environment



Empowering
Community



Promoting
Place-Keeping



Un río, una comunidad, una casa

Establecida en 2001, la Coalición Comunitaria del Río Duwamish (DRCC) proporciona recursos, conocimiento y acción para construir un futuro ambiental más justo y equitativo.

Nuestra Plataforma

Ambiente seguro

Eliminar la exposición de la comunidad a los peligros ambientales.

Centrarse en el mantenimiento de lugares

El aumento de puestos de trabajo, la capacidad para hacer frente y adaptarse a la comunidad puede permanecer arraigado en su lugar.

Incrementar la participación significativa

Continúe creciendo y sea guiado por la capacidad y el desarrollo de la comunidad, ¡incluida la juventud!

Elevar la toma de decisiones de la comunidad

Apoye a la comunidad, el gobierno y todos los tomadores de decisiones para que tomen decisiones juntos.

Nuestra misión

DRCC eleva la voz de aquellos afectados por la contaminación del río Duwamish y otras injusticias ambientales para un medio ambiente limpio, saludable y equitativo para las personas y la vida silvestre. Promovemos el mantenimiento del lugar y priorizamos la capacidad y la resiliencia de la comunidad.



Nuestros valores

- Lugar basado / mantenimiento de lugar
- El poder de la gente
- Centrado en la comunidad
- Transformación
- Justicia / Verdad al poder
- Adaptado
- Servicio / Reciprocidad
- Responsabilidad



Duwamish River Community Coalition



www.DRCC.org

DRCC_org



One River, One Community, One Home

Established in 2001, the Duwamish River Community Coalition (DRCC) provides resources, knowledge, and action to build more just and equitable environmental future.

Our Mission

DRCC elevates the voice of those impacted by the Duwamish River pollution and other environmental injustices for a clean, healthy, equitable environment for people and wildlife . We promote place-keeping and prioritize community capacity and resilience.



Our Platform

Safe Environment

Eliminate community exposure to environmental hazards.

Focus on Placekeeping

Increase jobs, capacity to cope and adapt to the community can remain rooted in place.

Grow Meaningful Involvement

Continue to grow and be led by community capacity and development- including the Youth!

Elevate Community Decision Making

Support community, government and all decision makers to make decisions together.

Our Values

- Place based/ Place-keeping
- People power
- Community Centered
- Transformation
- Justice/ Truth to Power
- Adaptive
- Service /Reciprocity
- Accountability



Duwamish River Community Coalition



www.DRCC.org

DRCC_org

ONE RIVER, One Community, One Home

An empowered Duwamish Valley community thriving in a healthy and just environment



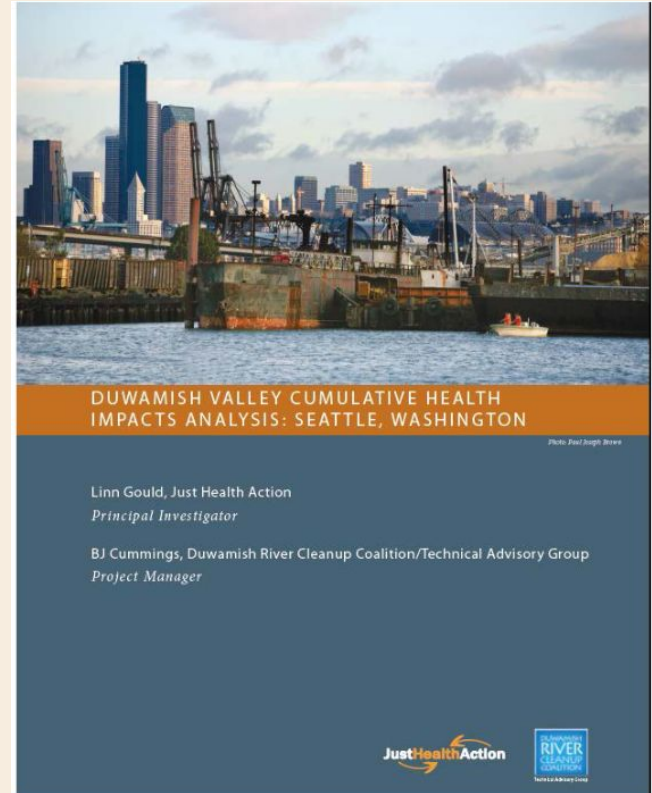
DUWAMISH VALLEY COMMUNITY ANXIETY



Art Credit to: Gabe
Peters

Cumulative Health Impact Assessment

In the report, a total of 15 indicators were input into a formula to calculate cumulative health impact scores for ten representative zip codes in Seattle. The highest cumulative impact score was the Beacon Hill/Georgetown/South Park neighborhood zip code 98108. With the support of this data, the Duwamish Valley can firmly be characterized as an area with disproportionate health impacts and environmental injustices where more actions, projects, and investment is needed to address health inequities.



A stylized map of the Seattle area is shown in the background. A light blue circle in the upper right corner is labeled 'LAURELHURST, NE SEATTLE'. A yellow circle in the lower right corner is labeled 'SOUTH PARK, GEORGETOWN'. A white line with '10 MILES' written next to it connects the two circles.

LAURELHURST,
NE SEATTLE

LIFE EXPECTANCY IN LAURELHURST

86 YEARS

LIFE EXPECTANCY IN SOUTH PARK

73 YEARS

10 MILES

SOUTH PARK,
GEORGETOWN

Why is our work important?

450 Houses Reached

Door-by-Door Knocking done by community organizers reaching out to community members in the Duwamish Valley to bring equal access to information.



4,600 Food Boxes Delivered

DRCC & DVYC have been delivering 20 months of food boxes to families within the Duwamish Valley



12,070 views

Through Facebook Lives reaching people



\$55,000 In Rental Assistance

Joining the \$300,000 of PTA efforts for Covid-19 Rental assistance.

\$5,000 Duwamish Dollars

A program designed to support the community while providing educational support.





We continue to work together to face systemic inequities.

We continue to prioritize community in our work--education, advocacy, youth empowerment--and making connections with neighbors. We have also been prioritizing local voices in discussions of the disproportionate impacts of toxic pollution in our river and air, together with all the environmental burdens that create even more health disparities.



Story behind the curve: WHY DOES SOPHIA HAVE ASTHMA?

It is not possible to tease apart the legacies of **racial discrimination**, such as redlining, from why Sophia experiences asthma, today. The **factors below** have led to Sophia's asthma and are **further exacerbated by the growing equity gap** in the City and within laws and regulations.

Proximity to sources of air pollution and industry

COVID-19 Impacts

Under invested neighborhood, low paying jobs

Poor industry environmental regulations

- No park or safe space to exercise in neighborhood
- Lack of trees and vegetation
- Emissions from industry
- Live near heavy roadways and high traffic vehicle/truck area
- Workplace exposure
- Climate change/wildfires
- No grocery in neighborhood with healthy foods
- Poverty/unemployment
- Trouble accessing health care
- WSB closure
- Lack of community consultation and decision-making power
- Unknown? More data?



Identifying Root Causes during the Stakeholders meeting

CALLING OUT FOR SPECIFIC ACTIONS:

- ❖ **New Narratives for WATER and ALL intersections**
incorporating Health EQUITY
Public investments in water infrastructure must explicitly engage low-income communities and people of color
- ❖ **Support policies and system changes-**
Strengthening regulatory oversight over polluted discharges to groundwater, including monitoring and reporting as well as enforcement of penalties for legal violations;

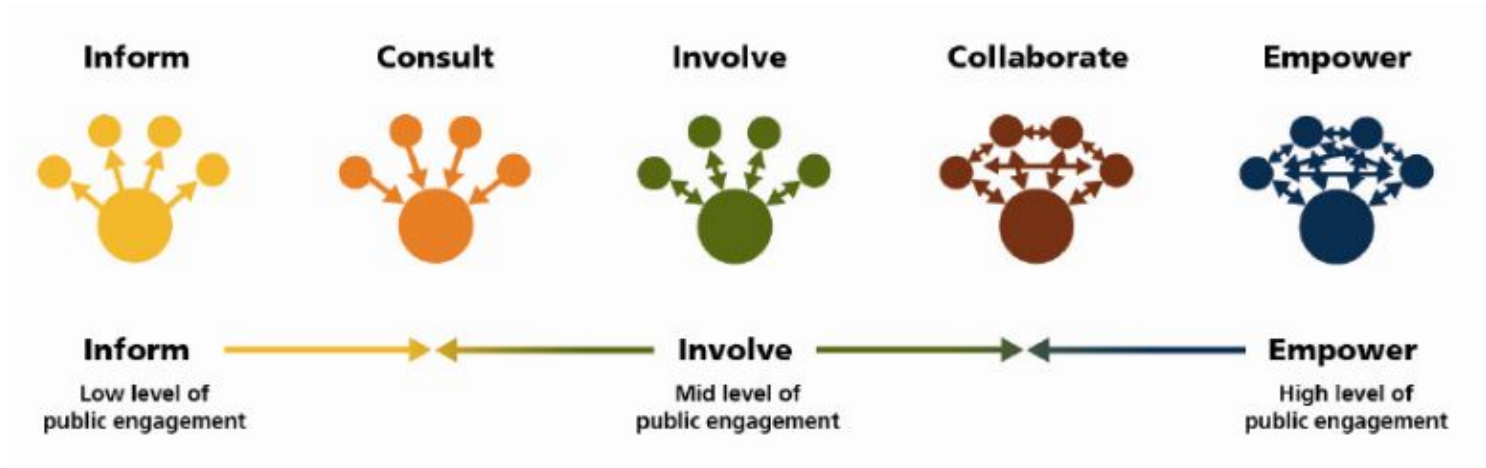
CALLING OUT FOR SPECIFIC ACTIONS:

- ❖ Invest in community capacity and participatory process

A new way of workin WITH community FOR community



Community Engagement Continuum



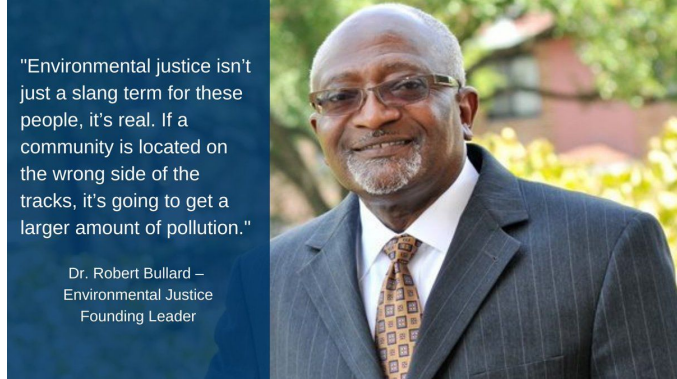
INVEST
PUT YOUR MONEY WHERE **YOUR** MOUTH IS

CREATING NEW INTERNAL STRUCTURES -

- **Is there a commitment and plan that includes budget?**
- **Do you have an impact plan ? and how are you designing this with community?**
- **Are communities included in the impact and implementation plan?**



NOTHING
ABOUT US
WITHOUT
US

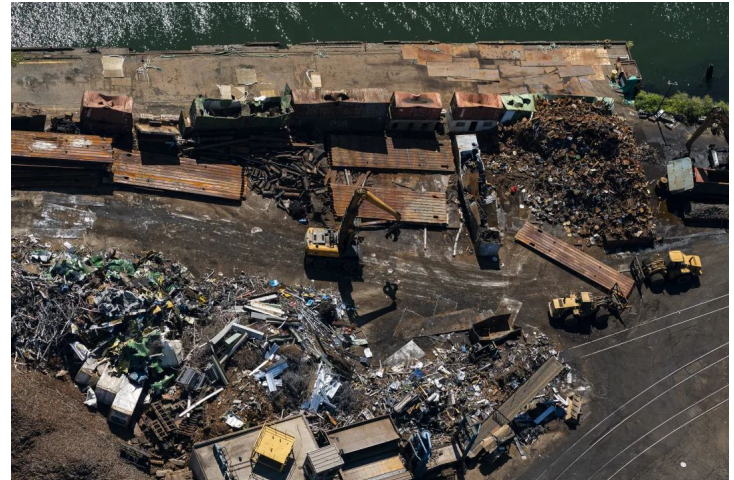


"Environmental justice isn't just a slang term for these people, it's real. If a community is located on the wrong side of the tracks, it's going to get a larger amount of pollution."

Dr. Robert Bullard –
Environmental Justice
Founding Leader

It took a biblical flood to get environmental groups...to come together with groups of the environmental justice, groups of faith-based groups, groups working on transportation and food security, etc. to come together. And we say it should not take a disaster for us to come together.

Robert Bullard, EJ Founding Leader



The Duwamish River is a lifeline, representing change, survival, and community. We want a clean-up that includes all of Seattle's beautiful and diverse communities. We depend on this river for food, work, and connection to nature. We deserve a clean up plan that will serve our communities for generations to come.



Clean Air Strategies

IMPROVE INDOOR AIR
QUALITY IN
MULTIFAMILY HOUSING
IN THE DUWAMISH
VALLEY.

MEJORAR LA CALIDAD
DEL AIRE INTERIOR EN
VIVIENDAS
MULTIFAMILIARES EN
EL DUWAMISH
VALLEY.

IMPROVE OUTDOOR AIR
QUALITY THROUGH
PHYSICAL
ENVIRONMENTAL
CHANGES.

MEJORAR LA CALIDAD
DEL AIRE EXTERIOR A
TRAVÉS DE CAMBIOS
AMBIENTALES FÍSICOS..

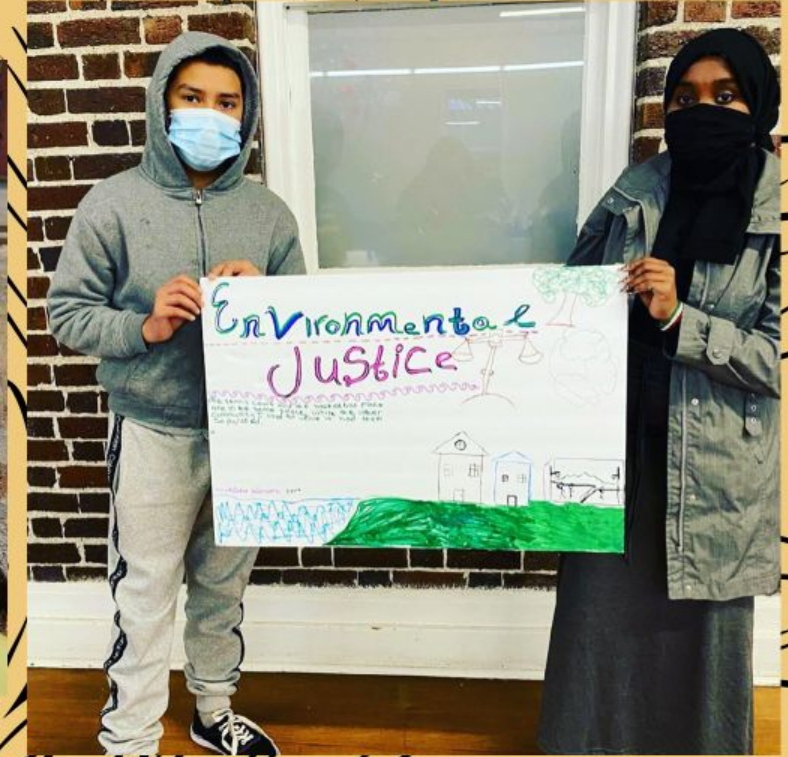
REDUCE
TRANSPORTATION
EMISSIONS IN THE
DUWAMISH VALLEY.

REDUCIR LAS
EMISIONES DEL
TRANSPORTE EN EL
VALLE DE DUWAMISH.

REDUCE INDUSTRY
EMISSIONS AND
POLLUTION THROUGH
EXISTING LEGAL
MEANS.

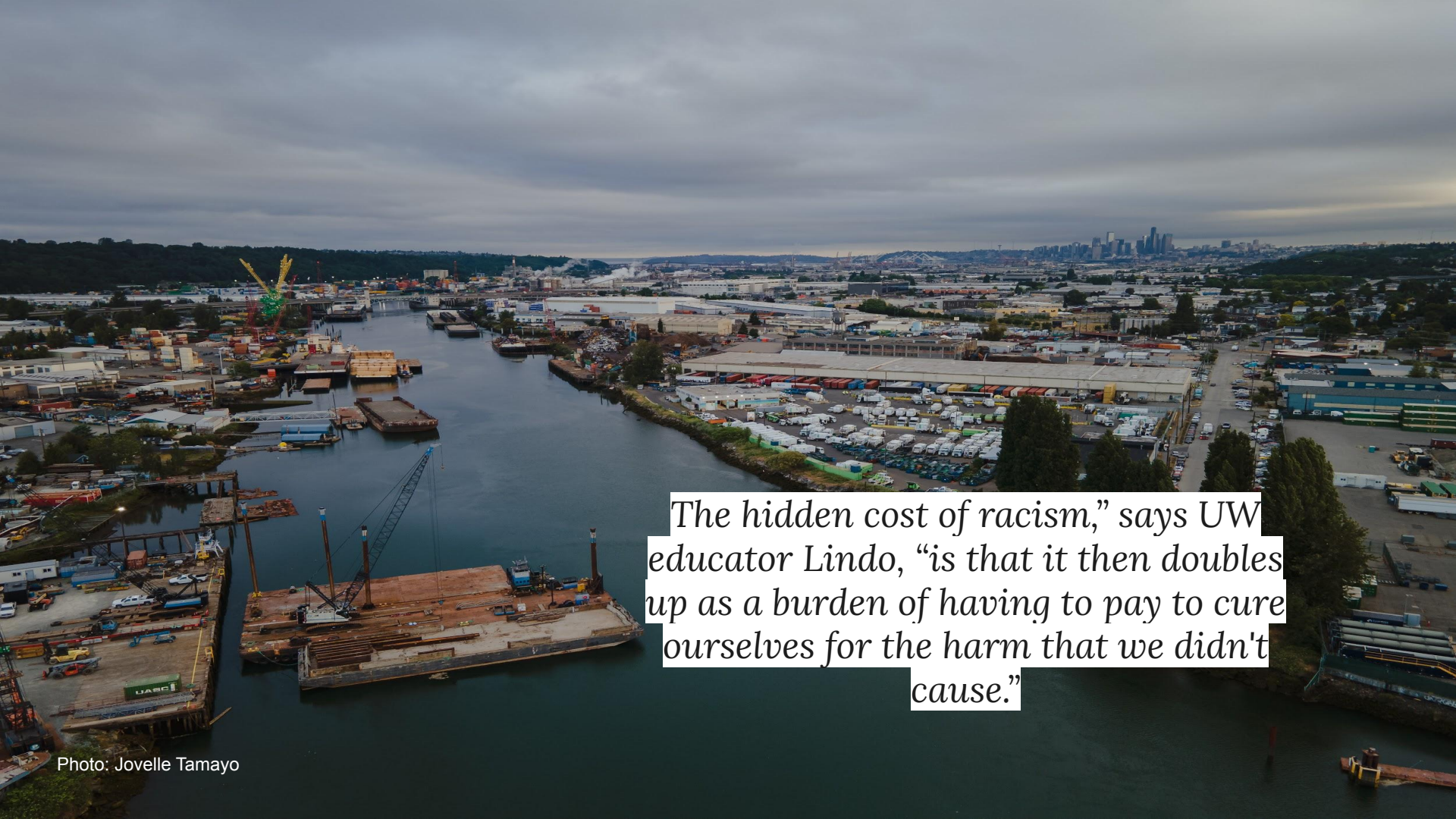
REDUCIR LAS
EMISIONES Y LA
CONTAMINACIÓN DE LA
INDUSTRIA A TRAVÉS
DE LOS MEDIOS
LEGALES EXISTENTES.

Youth Opportunities



DUWAMISH VALLEY YOUTH CORPS





The hidden cost of racism,” says UW educator Lindo, “is that it then doubles up as a burden of having to pay to cure ourselves for the harm that we didn't cause.”

**THANK YOU! Any Questions ?
For more information**

www.DRCC.org

